

GENERAL NOTES:

1. STORM PANEL SHOWN ON THIS PRODUCT EVALUATION DOCUMENT (P.E.D.) HAS BEEN VERIFIED FOR COMPLIANCE IN ACCORDANCE WITH THE 2017 (6th EDITION) OF THE FLORIDA BUILDING CODE. THIS STORM PANEL SHALL **NOT** BE INSTALLED AT HIGH VELOCITY HURRICANE ZONES (MIAMI-DADE / BROWARD COUNTIES).
DESIGN WIND LOADS SHALL BE DETERMINED AS PER SECTION 1609 OF THE ABOVE MENTIONED CODE, FOR A WIND SPEED AS REQUIRED BY THE JURISDICTION WHERE THESE SHUTTERS WILL BE INSTALLED AND FOR A DIRECTIONALITY FACTOR $K_d=0.85$, USING ASCE 7-10 FOR INSTALLATIONS UNDER 2017 FBG AND SHALL NOT EXCEED THE MAXIMUM (A.S.D.) DESIGN PRESSURE RATINGS INDICATED ON SHEETS 5, 10 THRU 15. IN ORDER TO VERIFY THE ABOVE CONDITION, ULTIMATE DESIGN WIND LOADS DETERMINED PER ASCE 7-10 SHALL BE FIRST REDUCED TO A.S.D. DESIGN WIND LOADS BY MULTIPLYING THEM BY 0.6 IN ORDER TO TO COMPARE THESE W/ MAX. (A.S.D) DESIGN PRESSURE RATINGS INDICATED ON SHEETS 5, 10 THRU 15. IN ORDER TO VERIFY THAT COMPONENTS AND ANCHORS ON THIS P.E.D. AS TESTED WERE NOT OVER STRESSED, A 33% INCREASE IN ALLOWABLE STRESS FOR WIND LOADS WAS NOT USED IN THEIR ANALYSIS. A DURATION FACTOR $CD=1.60$ WAS USED FOR VERIFICATION OF FASTENERS IN WOOD.
STORM PANEL'S ADEQUACY FOR IMPACT AND FATIGUE RESISTANCE HAS BEEN VERIFIED IN ACCORDANCE WITH SECTION 1609.1.2 OF THE ABOVE MENTIONED CODE AS PER ATL REPORTS # 1128.01-00 AND #0610.02-05, AS PER IMPACT TESTING EQUIVALENT TO ASTM E-1996 STANDARD & ASTM E 330-02 STANDARD, LIMITED TO INSTALLATIONS WITHIN WIND ZONES 1, 2 & 3 AS DEFINED BY ASTM E-1996 STANDARD.
2. ALL ALUMINIUM SHEET METAL PANELS SHALL HAVE 5052-H32 OR 3004-H34 ALLOY.
3. ALL ALUMINIUM EXTRUSIONS SHALL BE ALUMINIUM ASSOCIATION 6063-T6 ALLOY & TEMPER UNLESS OTHERWISE NOTED.
4. ALL SCREWS TO BE STAINLESS STEEL 304 OR 316 AISI SERIES OR CORROSION RESISTANT COATED CARBON STEEL AS PER DIN 50018 W/ 50 KSI YIELD STRENGTH AND 90 KSI TENSILE STRENGTH & SHALL COMPLY W/ FLORIDA BUILDING CODE SECTION 2411.3.3.4.
5. BOLTS TO BE ASTM A-307 GALVANIZED STEEL OR AISI 304 SERIES STAINLESS STEEL, WITH 35 KSI MINIMUM YIELD STRENGTH.
6. ANCHORS TO WALL SHALL BE AS FOLLOWS: (UNLESS OTHERWISE NOTED)
 - (A) TO EXISTING POURED CONCRETE:
 - 1/4" ϕ TAPCON ANCHORS AS MANUFACTURED BY I.T.W. BUILDEX.
 - 1/4" ϕ x 7/8" CALK-IN ANCHORS OR ELCO male & female "PANELMATE" AS MANUFACTURED BY POWER FASTENERS, INC. AND ELCO CONSTRUCTION PRODUCTS, RESPECTIVELY.
 - 1/4" ϕ x 3/4" ALL POINTS SOLID-SET ANCHORS AS DISTRIBUTED BY ALL POINTS SCREW, BOLT & SPECIALTY COMPANY.
 - NOTES:
 - A.1) MINIMUM EMBEDMENT INTO POURED CONCRETE OF TAPCON AND ELCO PANELMATE ANCHORS IS 1 3/4".
 - A.2) 7/8" CALK-IN ANCHORS SHALL BE ENTIRELY EMBEDDED INTO THE POURED CONCRETE. NO EMBEDMENT INTO STUCCO SHALL BE PERMITTED. 1/4" ϕ -20 SCREWS USED SHALL BE 1 1/2" LONG MINIMUM SHOULD STUCCO EXIST, AND 1" MINIMUM FOR WALLS WITH NO STUCCO.
 - A.3) MINIMUM EMBEDMENT OF 1/4" ϕ x 3/4" ALL POINTS SOLID-SET ANCHORS SHALL BE 7/8" INTO THE POURED CONCRETE. NO EMBEDMENT INTO STUCCO SHALL BE PERMITTED. 1/4" ϕ -20 S.S. MACHINE SCREW USED SHALL BE 1 1/2" LONG MINIMUM SHOULD STUCCO EXIST, AND 1" MINIMUM FOR WALLS WITH NO STUCCO.
 - A.4) IN CASE THAT PRECAST STONE, PRECAST CONCRETE PANELS, OR PAVERS BE FOUND ON THE EXISTING WALL OR FLOOR, ANCHORS SHALL BE LONG ENOUGH TO REACH THE MAIN STRUCTURE BEHIND SUCH PANELS, ANCHORAGE SHALL BE AS INDICATED ON NOTES A.1) & A.2) ABOVE.
 - (B) TO EXISTING CONCRETE BLOCK WALL:
 - 1/4" ϕ TAPCON ANCHORS AS MANUFACTURED BY I.T.W. BUILDEX.
 - 1/4" ϕ x 7/8" CALK-IN ANCHORS OR ELCO male & female "PANELMATE" AS MANUFACTURED BY POWER FASTENERS, INC. AND ELCO CONSTRUCTION PRODUCTS, RESPECTIVELY.
 - 1/4" ϕ x 3/4" ALL POINTS SOLID-SET ANCHORS AS DISTRIBUTED BY ALL POINTS SCREW, BOLT & SPECIALTY COMPANY.

NOTES:
B.1) MINIMUM EMBEDMENT OF TAPCON AND ELCO PANELMATE ANCHORS INTO CONCRETE BLOCK UNIT SHALL BE 1 1/4".

B.2) 7/8" CALK-IN ANCHORS SHALL BE ENTIRELY EMBEDDED INTO THE CONCRETE BLOCK UNIT. NO EMBEDMENT INTO STUCCO SHALL BE PERMITTED. 1/4" ϕ -20 SCREWS USED SHALL BE 1 1/2" LONG MINIMUM SHOULD STUCCO EXIST, AND 1" MINIMUM FOR WALLS WITH NO STUCCO.

B.3) MINIMUM EMBEDMENT OF 1/4" ϕ x 3/4" ALL POINTS SOLID-SET ANCHORS SHALL BE 7/8" INTO THE CONCRETE BLOCK. NO EMBEDMENT INTO STUCCO SHALL BE PERMITTED. 1/4" ϕ -20 S.S. MACHINE SCREW USED SHALL BE 1 1/2" LONG MINIMUM SHOULD STUCCO EXIST, AND 1" MINIMUM FOR WALLS WITH NO STUCCO.

B.4) IN CASE THAT PRECAST STONE OR PRECAST CONCRETE PANELS BE FOUND ON THE EXISTING WALL, ANCHORS SHALL BE LONG ENOUGH TO REACH THE MAIN STRUCTURE BEHIND SUCH PANELS. ANCHORAGE SHALL BE AS INDICATED ON NOTES IN B.1) AND B.2) ABOVE.

(C) ANCHORS SHALL BE INSTALLED FOLLOWING ALL OF THE RECOMMENDATIONS AND SPECIFICATIONS OF THE ANCHOR'S MANUFACTURER.

7. PANELS MAY ALSO BE INSTALLED HORIZONTALLY FOLLOWING INSTALLATION DETAILS SHOWN ON SECTIONS 1 THRU 9 (SHEET 3 & 5 OF 15) EXCEPT THAT HEADERS 2, 3 & 4 SHALL NOT BE USED.

8. IT SHALL BE THE RESPONSIBILITY OF THE CONTRACTOR TO VERIFY THE SOUNDNESS OF THE STRUCTURE WHERE SHUTTER IS TO BE ATTACHED TO INSURE PROPER ANCHORAGE. THIS SHUTTER SHALL ONLY BE ATTACHED TO CONCRETE, BLOCK OR WOOD FRAME BUILDINGS.

9. THE INSTALLATION CONTRACTOR IS TO SEAL/CAULK ALL SHUTTER COMPONENT EDGES WHICH REMAIN IN CONTINUOUS CONTACT WITH THE BUILDING TO PREVENT WIND/RAIN INTRUSION. CAULK AND SEAL SHUTTER TRACKS ALL AROUND FULL LENGTH.

10. (a) THIS P.E.D. PREPARED BY THIS ENGINEER IS GENERIC AND DOES NOT PROVIDE INFORMATION FOR A SITE SPECIFIC PROJECT; i.e. WHERE THE SITE CONDITIONS DEVIATE FROM THE P.E.D.

(b) CONTRACTOR TO BE RESPONSIBLE FOR THE SELECTION, PURCHASE AND INSTALLATION INCLUDING LIFE SAFETY OF THIS PRODUCT, BASED ON THIS P.E.D. PROVIDED HE/SHE DOES NOT DEVIATE FROM THE CONDITIONS DETAILED ON THIS DOCUMENT. CONSTRUCTION SAFETY AT SITE IS THE CONTRACTOR'S RESPONSIBILITY.

(c) THIS P.E.D. WILL BE CONSIDERED INVALID IF ALTERED BY ANY MEANS.

(d) SITE SPECIFIC PROJECTS SHALL BE PREPARED BY A FLORIDA REGISTERED ENGINEER OR ARCHITECT WHICH WILL BECOME THE ENGINEER OF RECORD (E.O.R.) FOR THE PROJECT AND WHO WILL BE RESPONSIBLE FOR THE PROPER USE OF THE P.E.D. ENGINEER OF RECORD, ACTING AS A DELEGATED ENGINEER TO THE P.E.D. ENGINEER, SHALL SUBMIT TO THIS LATTER THE SITE SPECIFIC DRAWINGS FOR REVIEW.

(e) THIS P.E.D. SHALL BEAR THE DATE AND ORIGINAL SEAL AND SIGNATURE OF THE PROFESSIONAL ENGINEER OF RECORD THAT PREPARED IT.

11. SHUTTER MANUFACTURER'S LABEL SHALL BE LOCATED ON A READILY VISIBLE LOCATION AT STORM PANEL IN ACCORDANCE WITH SECTION 1709.9.3 OF FLORIDA BUILDING CODE. ONE LABEL SHALL BE PLACED FOR EVERY OPENING. LABELING TO COMPLY WITH SECTION 1709.9.2 OF THE FLORIDA BUILDING CODE

THIS DRAWING SHALL ONLY BE USED TO OBTAIN PERMITS IN THE STATE OF FLORIDA



© 2017 TILTECO, INC.

FLORIDA BUILDING CODE (Non High Velocity Hurricane Zone)

0.040" BERTHA ALUMINIUM STORM PANEL
(2.25" DEEP)

TILTECO inc.

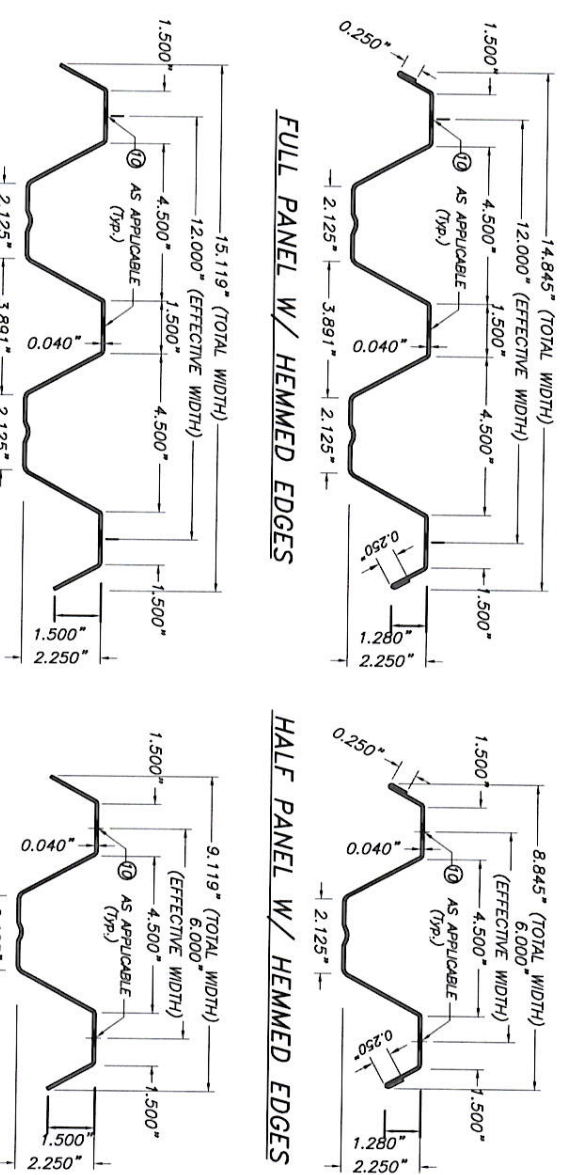
EASTERN METAL SUPPLY, INC

4268 WEST ROADS DRIVE
WEST PALM BEACH, FL 33407
PHONE: (561)209-8263, FAX: (561)841-1716

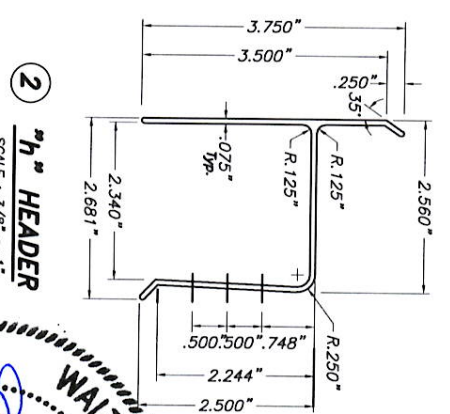
DRAWING No. 17-094
SHEET 1 OF 15

REV. NO.	DESCRIPTION	DATE	REV. NO.	DESCRIPTION	DATE
1	QTD 15-042	07/25/17	3		
2	Q.W. 1	10/28/17	4		

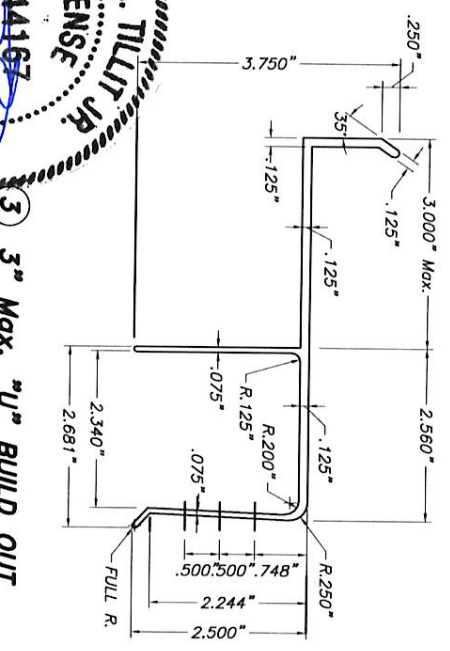
TILIT TESTING & ENGINEERING COMPANY
6355 N.W. 35th, St. SW, 305 VINCENNA CAMPBELL, FL 33186
Phone: (305)971-1530, Fax: (305)971-1531
EG-0006719
WALTER A. TILIT JR., P.E.
FLORIDA Lic. # 44167



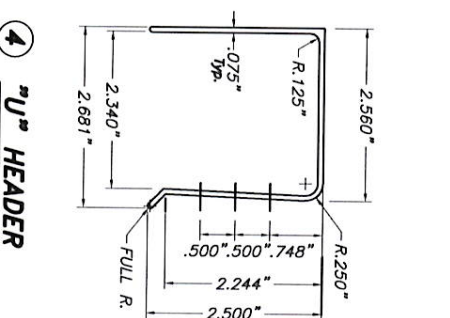
OPTIONAL FULL PANEL W/O HEMMED EDGES
OPTIONAL HALF PANEL W/O HEMMED EDGES



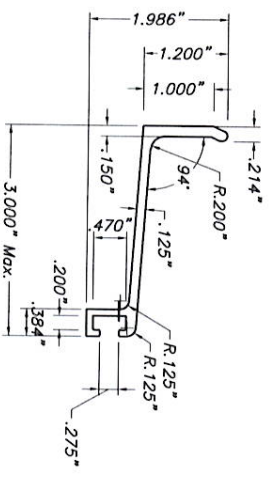
2 h\"/>



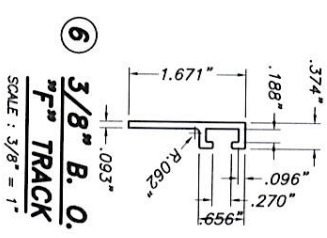
3 3\"/>



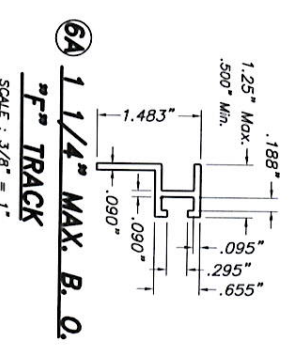
4 U\"/>



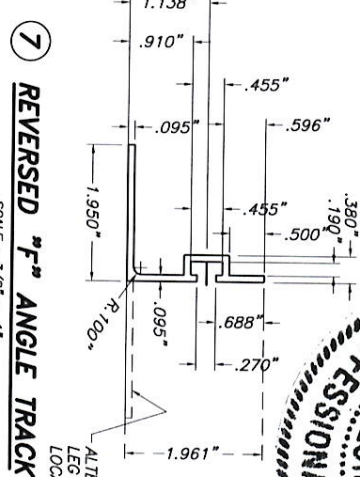
1 STORM PANEL
SCALE: 3/16\"/>



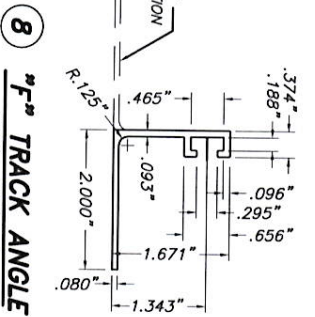
6 3/8\"/>



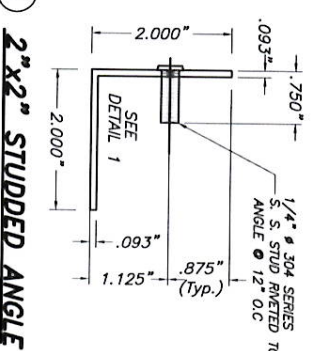
6A 1 1/4\"/>



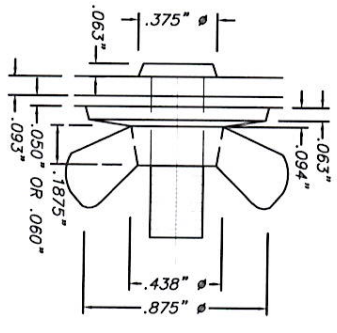
7 REVERSED F\"/>



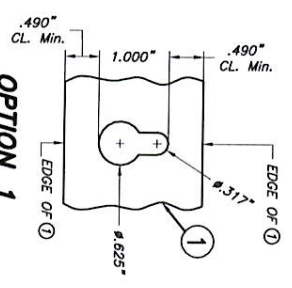
8 F\"/>



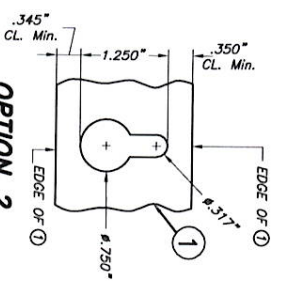
9 2\"/>



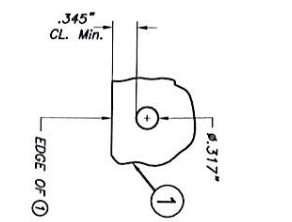
5 3\"/>



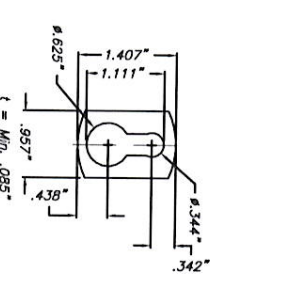
10 KEY HOLE AT PANEL
OPTION 1



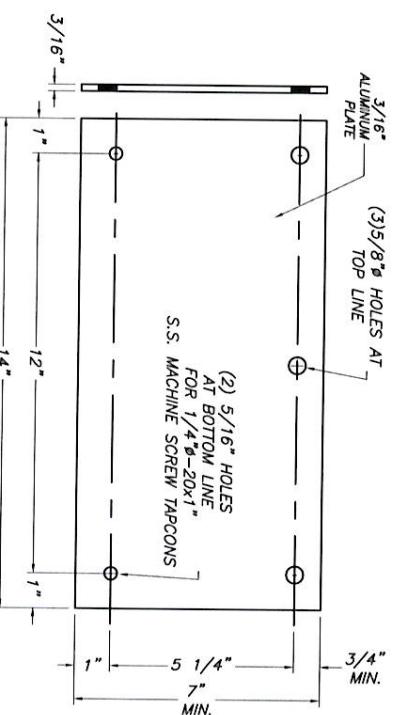
10 KEY HOLE AT PANEL
OPTION 2



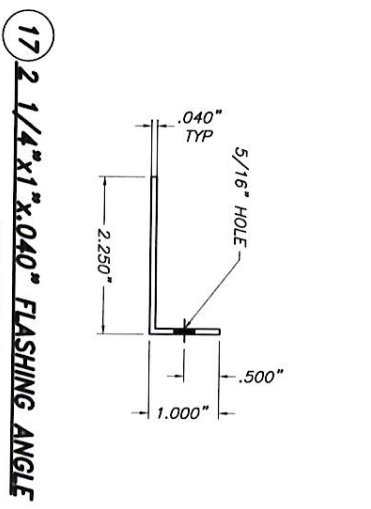
10A ROUND HOLE AT PANEL
(OPTION TO 10)



11 KEY HOLE WASHER
3105-H154 Alum. ALLOY
SCALE: 3/8\"/>

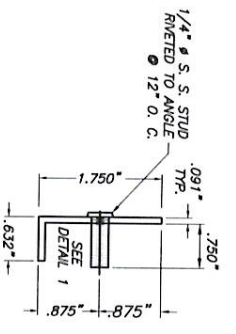


16 3/16\"/>

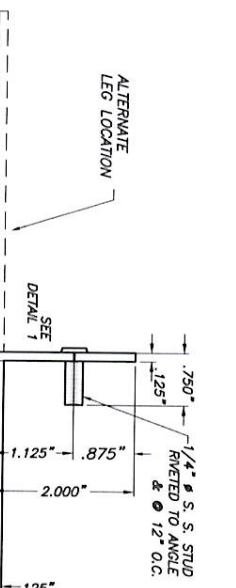


17 2 1/4\"/>

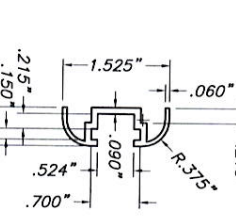
DETAIL 1: STUD W/ DIE CAST ZINC NICKEL PLATED WING NUT



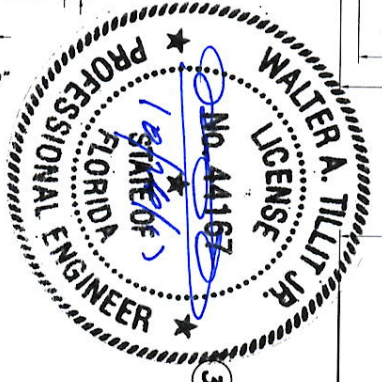
12 MINI WALL 1.25\"/>



13 2\"/>



15 C\"/>



COMPONENTS

FLORIDA BUILDING CODE (Non High Velocity Hurricane Zone)
0.040\"/>

EASTERN METAL SUPPLY, INC

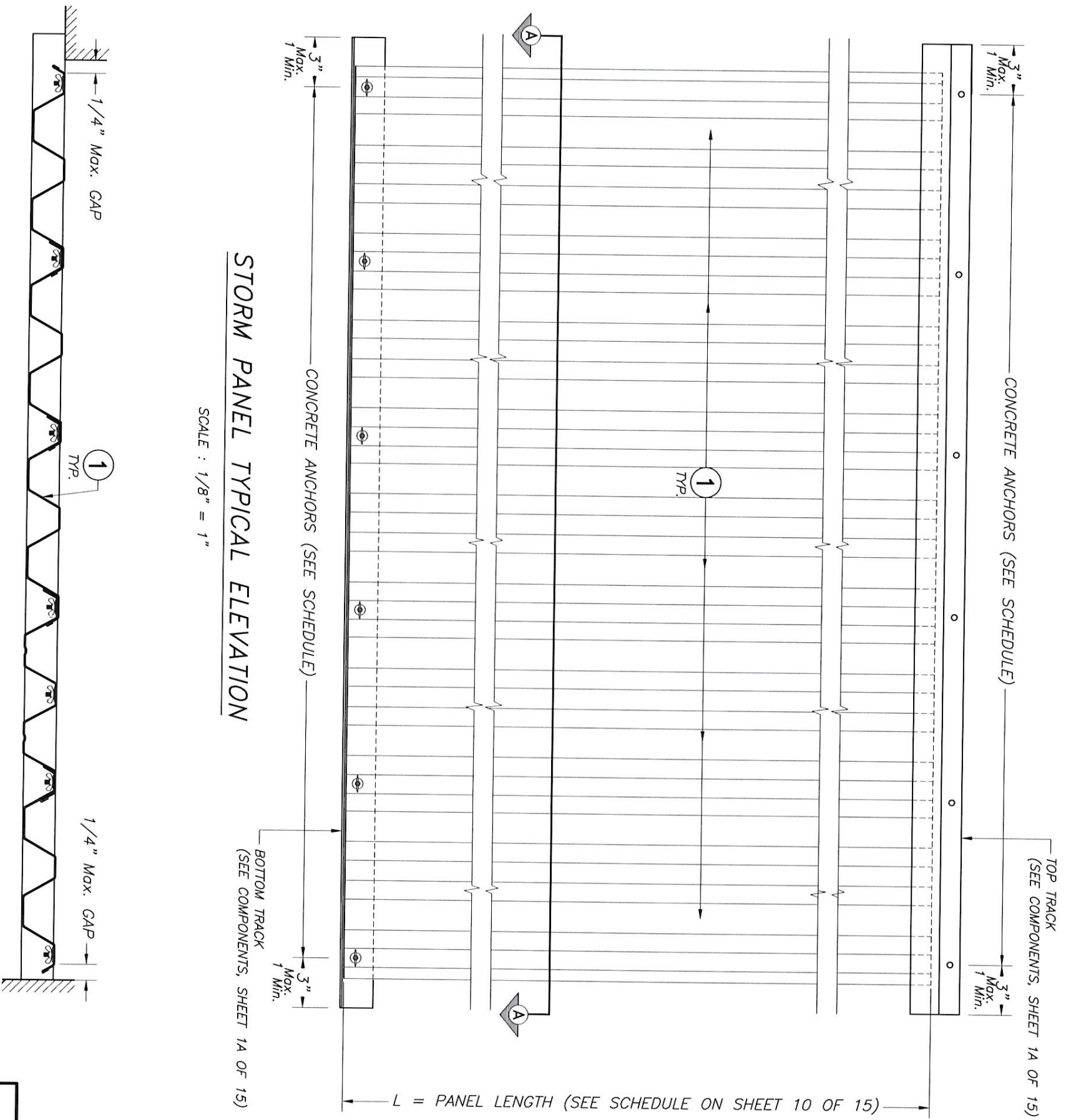
4268 WEST ROADS DRIVE
WEST PALM BEACH, FL 33407
PHONE: (561)209-8263, FAX: (561)841-1716

TILECO INC.
© 2017 TILECO, INC.
TILIT TESTING & ENGINEERING COMPANY
6335 N.W. 38th St. Suite 500, Fort Lauderdale, FL 33309
Phone: (754)971-1530 Fax: (754)971-1531
WALTER A. TILIT JR., P.E.
FLORIDA LIC. # 44167

REV. NO.	DESCRIPTION	DATE	REV. NO.	DESCRIPTION	DATE
1	QLD 15-042	07/25/17	3		
2			4		

17-094
DRAWING No

SHEET 1A OF 15



STORM PANEL TYPICAL ELEVATION

SCALE : 1/8" = 1"

SECTION A-A

SCALE : 1/8" = 1"



FLORIDA BUILDING CODE (Non High Velocity Hurricane Zone)

0.040" BERTHA ALUMINUM STORM PANEL
(2.25" DEEP)

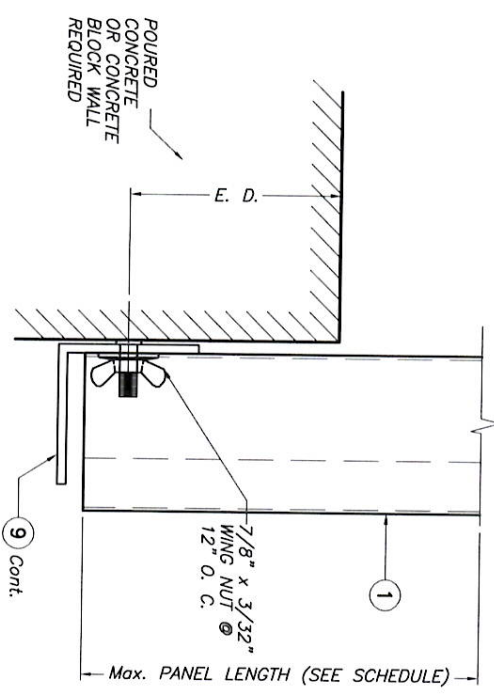
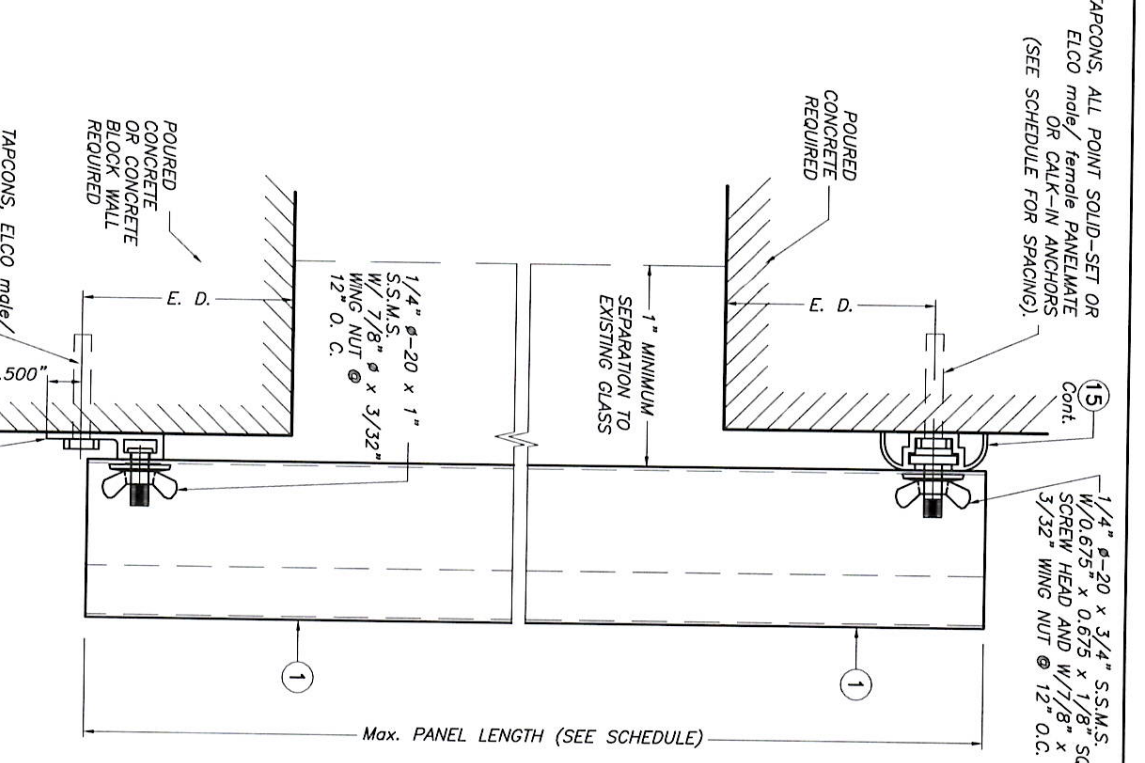
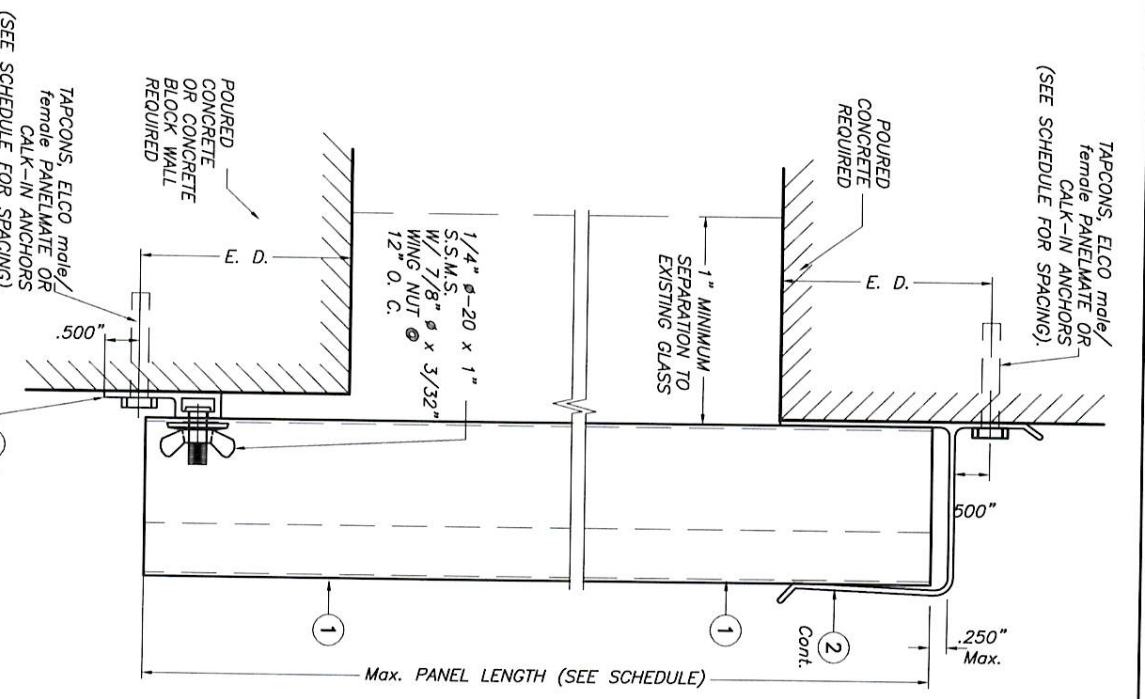
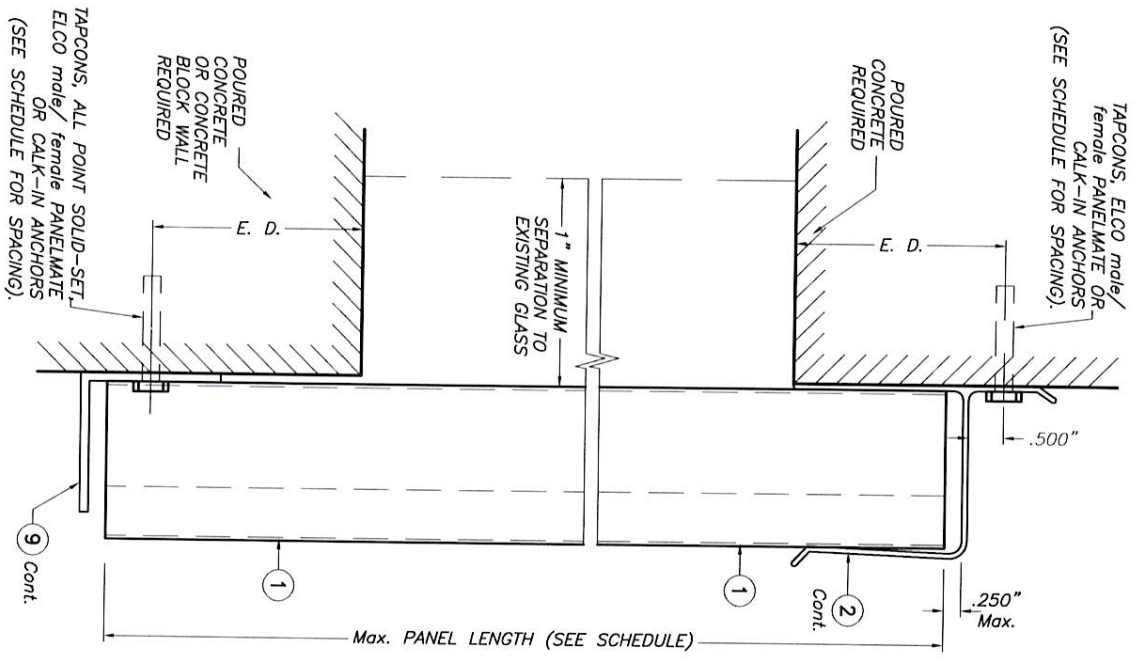
EASTERN METAL SUPPLY, INC

4268 WEST ROADS DRIVE
WEST PALM BEACH, FL. 33407
PHONE: (561)209-8263 FAX: (561)841-1716

TILECO INC.
© 2017 TILECO, INC.
TILLIT TESTING & ENGINEERING COMPANY
6355 N.W. 35th. St., Ste. 305, Virginia Gardens, FL 33166
Phone : (305)971-1530, Fax : (305)971-1531
EB-0006719
WALTER A. TILLIT Jr., P.E.
FLORIDA Lic. # 44167

REV. No	DESCRIPTION	DATE	REV. No	DESCRIPTION	DATE
1	QLD 15-042	07/25/17	3		
2					

L.C.
DRAWN BY:
07/25/17
DATE:
17-094
DRAWING No
SHEET 2 OF 15



NOTE FOR COMBINATION OF SECTIONS:
WALL/FLOOR/CEILING MOUNTING SECTIONS CAN BE COMBINED IN ANY WAY TO SUIT ANY INSTALLATION.

E. D. = EDGE DISTANCE
(SEE SCHEDULE ON SHEETS 10 OF 15)



SECTION 1
WALL MOUNTING INSTALLATION

SECTION 2
WALL MOUNTING INSTALLATION

SECTION 3
WALL MOUNTING INSTALLATION

FLORIDA BUILDING CODE (Non High Velocity Hurricane Zone)
0.040" BERTHA ALUMINUM STORM PANEL
(2.25" DEEP)



TILIT TESTING & ENGINEERING COMPANY
6355 N.W. 35th, St. St. 305 VINCENNA, OAKBROOK, FL 33407
Phone: (305)971-1530, Fax: (305)971-1531
EB-0006719
WALTER A. TILLIT JR., P.E.
FLORIDA Lic. # 44167

EASTERN METAL SUPPLY, INC.
4268 WEST ROADS DRIVE
WEST PALM BEACH, FL 33407
PHONE: (561)209-8263 FAX: (561)841-1716

REV. NO.	DESCRIPTION	DATE	REV. NO.	DESCRIPTION	DATE
1	QLD 15-04Z	07/25/17	3		
2			4		

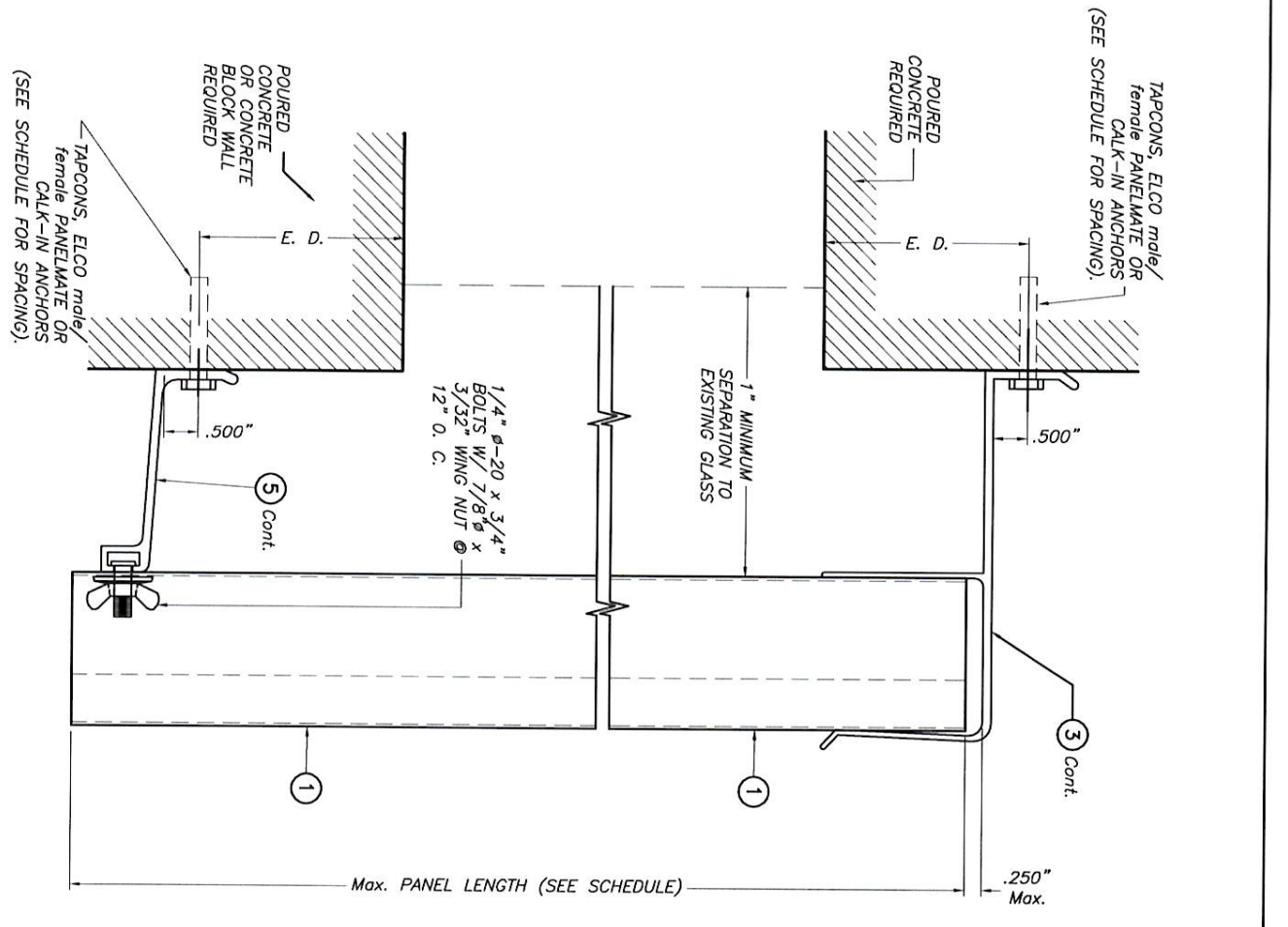
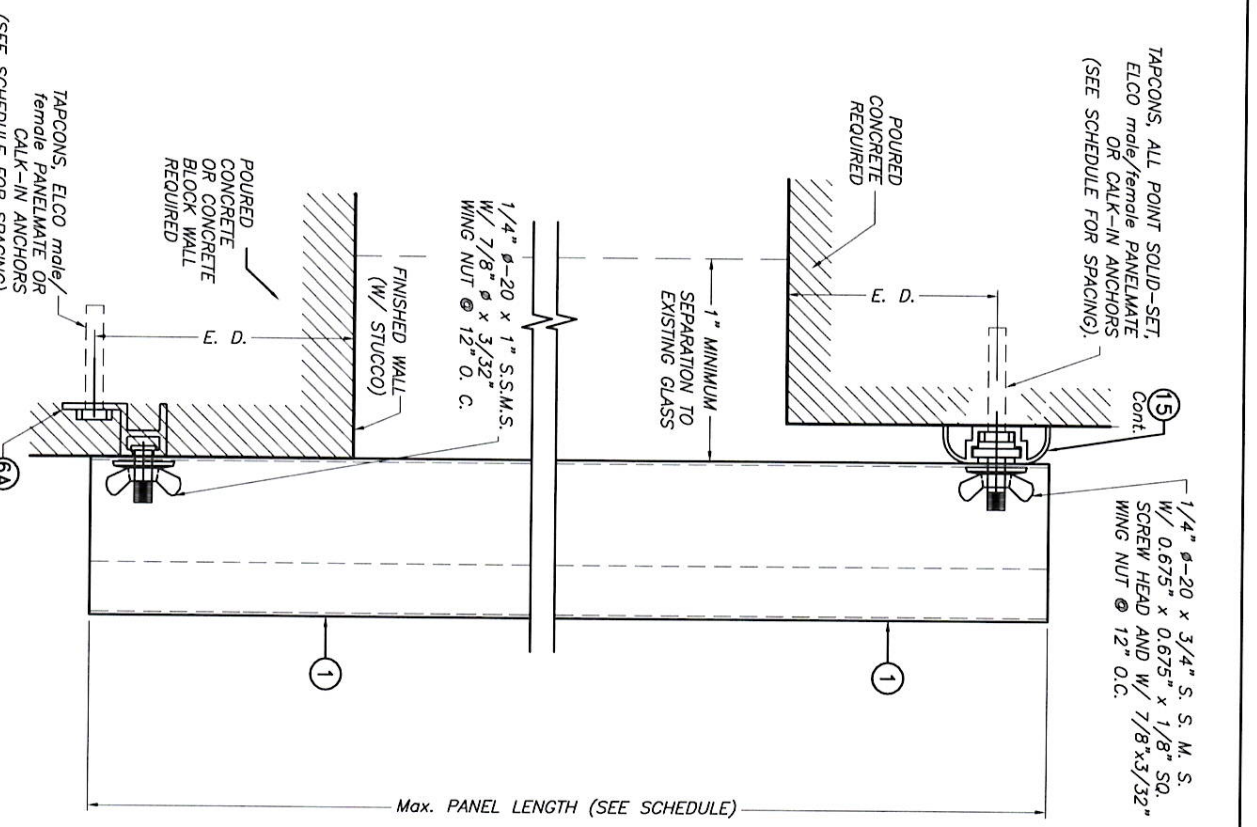
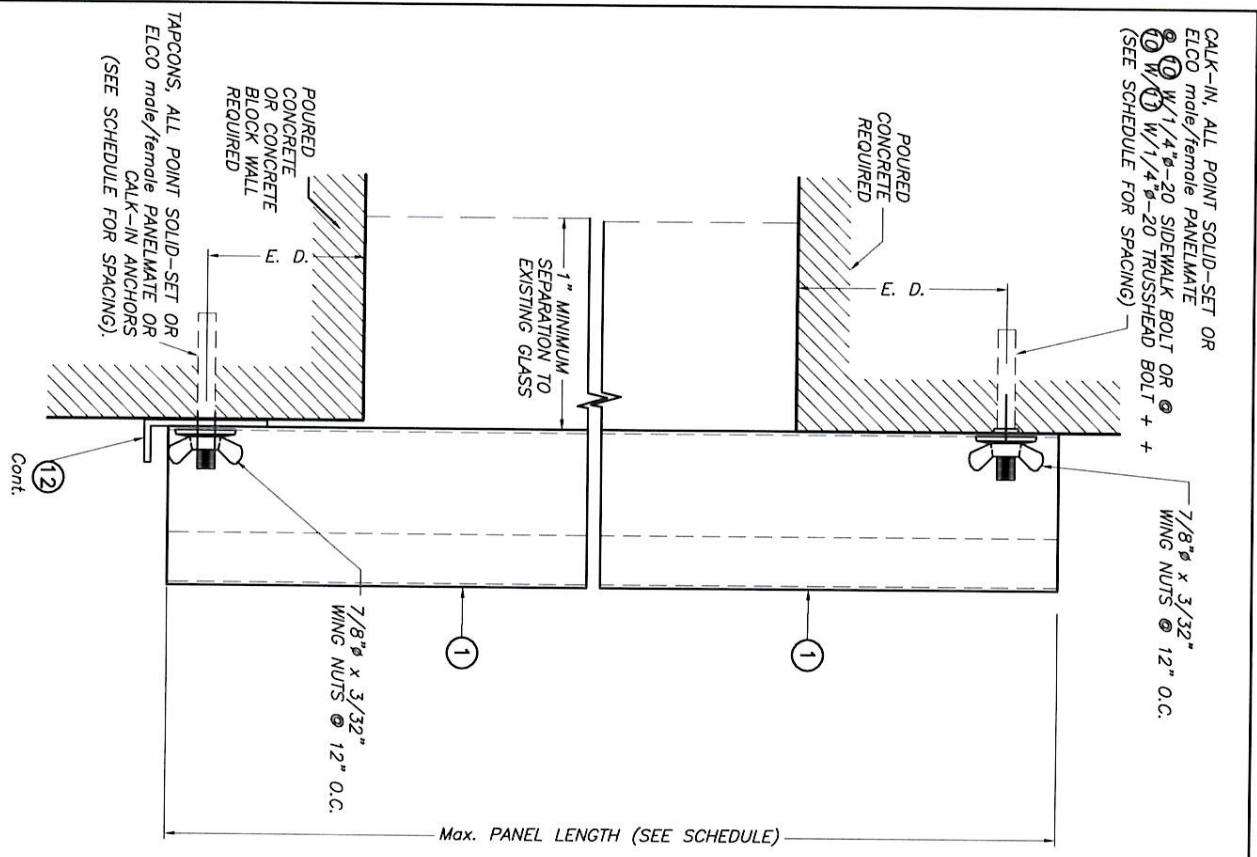
L.C.
DRAWN BY:
07/25/17
DATE:
17-094
DRAWING No

SHEET 3 OF 15

SCALE: 3/8" = 1"

SCALE: 3/8" = 1"

SCALE: 3/8" = 1"



WALL MOUNTING INSTALLATION
SECTION 4

SCALE : 3/8" = 1"

WALL MOUNTING INSTALLATION
SECTION 5

SCALE : 3/8" = 1"

BUILD OUT INSTALLATION
SECTION 6

SCALE : 3/8" = 1"

E. D. = EDGE DISTANCE
(SEE SCHEDULE ON
SHEETS 10 OF 15)

NOTE FOR COMBINATION OF SECTIONS :
WALL/FLOOR/CEILING MOUNTING SECTIONS CAN BE
COMBINED IN ANY WAY TO SUIT ANY INSTALLATION.

++ SIDE WALK BOLTS ARE 3/4" x 3/32" THICK
HEAD MACHINE SCREW W/LENGTH
AS PER NOTES A.2 & B.2 (SHEET 1)
++ TRUSS HEAD BOLTS ARE 1/2" x 1/8" THICK
HEAD MACHINE SCREW W/LENGTH
AS PER NOTES A.2 & B.2 (SHEET 1)



© 2017 TILTECO, INC.

FLORIDA BUILDING CODE (Non High Velocity Hurricane Zone)

0.040" BERTHA ALUMINUM STORM PANEL
(2.25" DEEP)

EASTERN METAL SUPPLY, INC

4288 WEST ROADS DRIVE
WEST PALM BEACH, FL. 33407
PHONE: (561)209-8263, FAX: (561)841-1716

TILTECO INC.
TILLIT TESTING & ENGINEERING COMPANY
6385 N.W. 36th, Ste. 305, VIRGINIA GARDENS, FL. 33166
Phone : (305)971-1530, Fax : (305)971-1531
EB-0006719
WALTER A. TILLIT JR., P.E.
FLORIDA Lic. # 44167

REV. NO	DESCRIPTION	DATE	REV. NO	DESCRIPTION	DATE
1	OLD 15-042	07/28/17	3		
2			4		

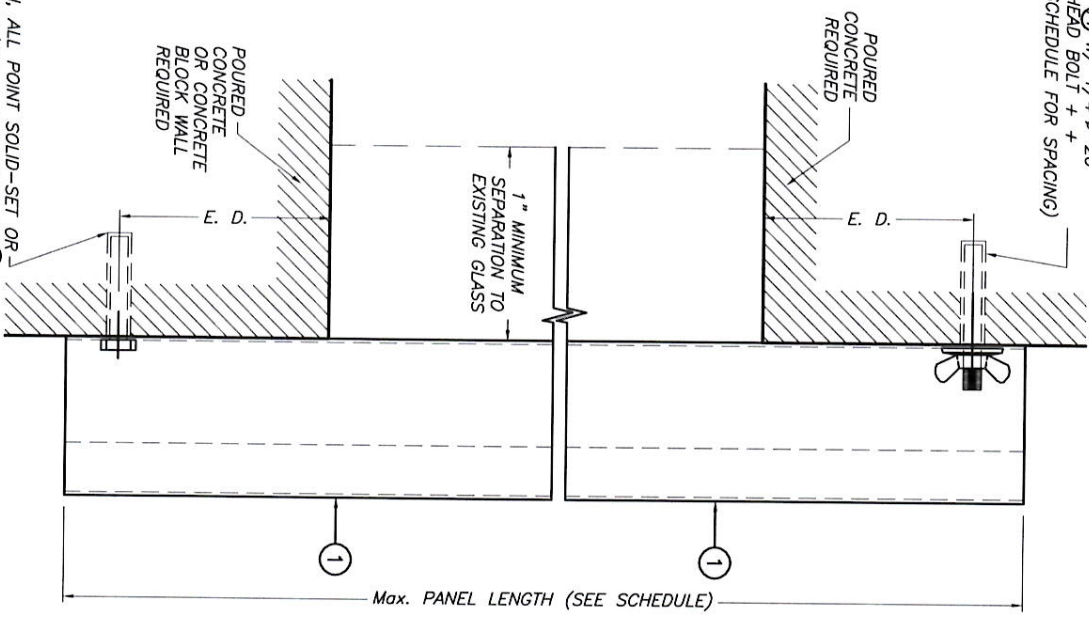
17-094
DRAWING No

L.C.
DRAWN BY:

07/25/17
DATE:

SHEET 4 OF 15

CALK-IN, ALL POINT SOLID-SET OR ELCO male/female PANELMATE $\text{\textcircled{1}}$ W/1/4" $\text{\textcircled{2}}$ -20 SIDEWALK BOLT OR $\text{\textcircled{3}}$ TRUSSHEAD BOLT + + (SEE SCHEDULE FOR SPACING)



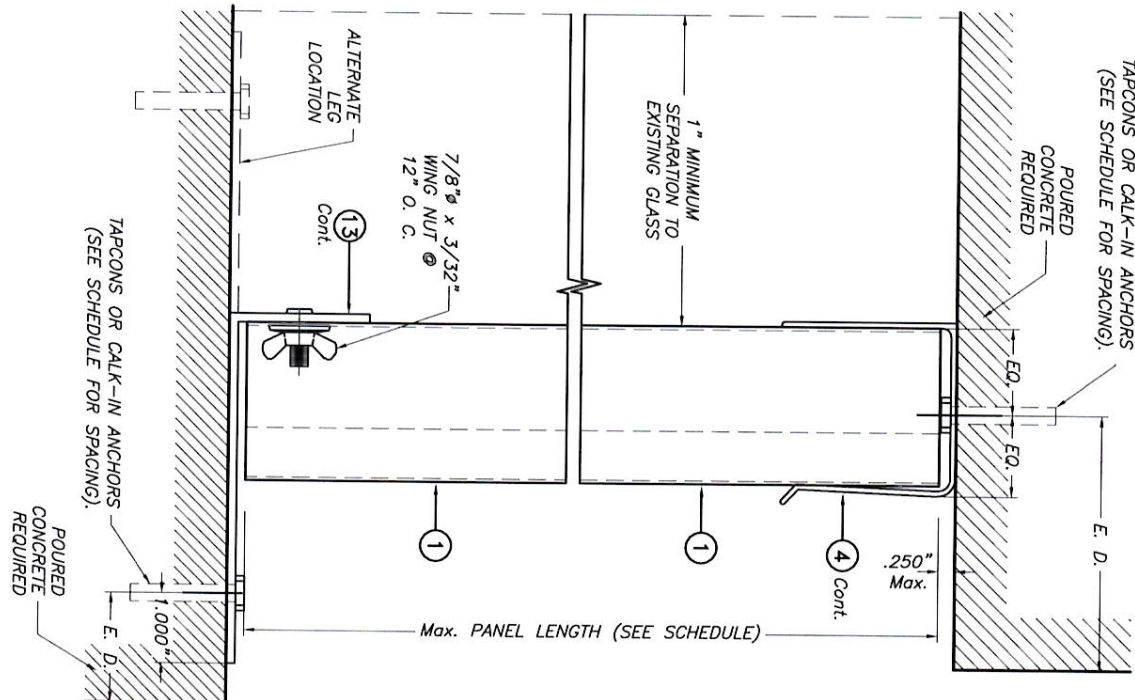
CALK-IN, ALL POINT SOLID-SET OR ELCO male/female PANELMATE $\text{\textcircled{1}}$ W/1/4" $\text{\textcircled{2}}$ -20 SIDEWALK BOLT OR $\text{\textcircled{3}}$ TRUSSHEAD BOLT + + (SEE SCHEDULE FOR SPACING)

WALL MOUNTING INSTALLATION (D. M.)

SECTION 7

SCALE : 3/8" = 1"

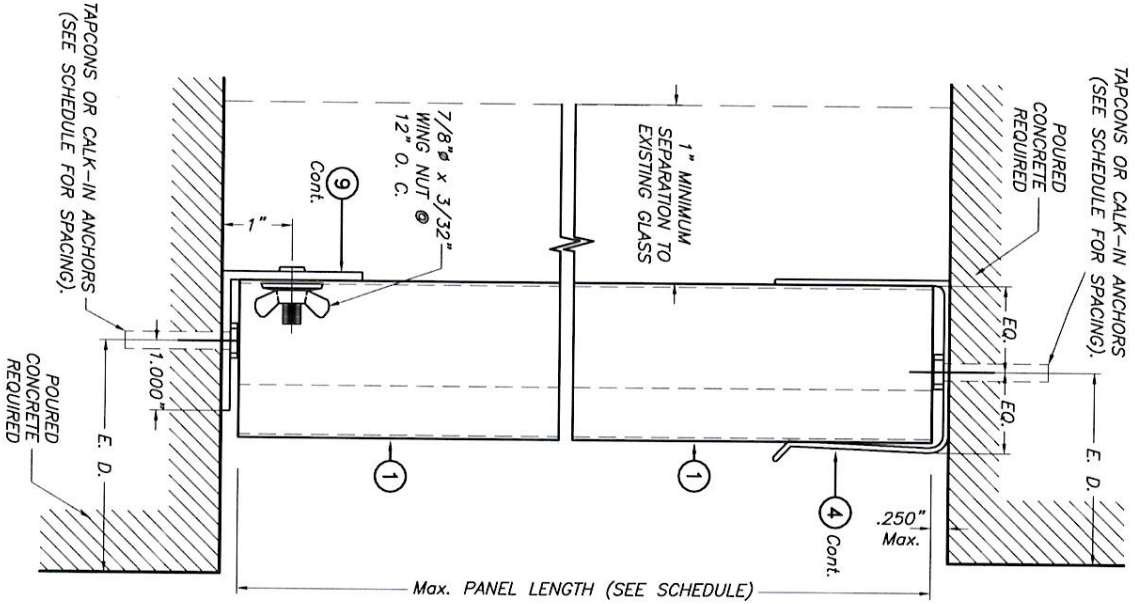
TAPCONS OR CALK-IN ANCHORS (SEE SCHEDULE FOR SPACING)



CEILING & FLOOR MOUNTING INSTALLATION - SECTION 8

SCALE : 3/8" = 1"

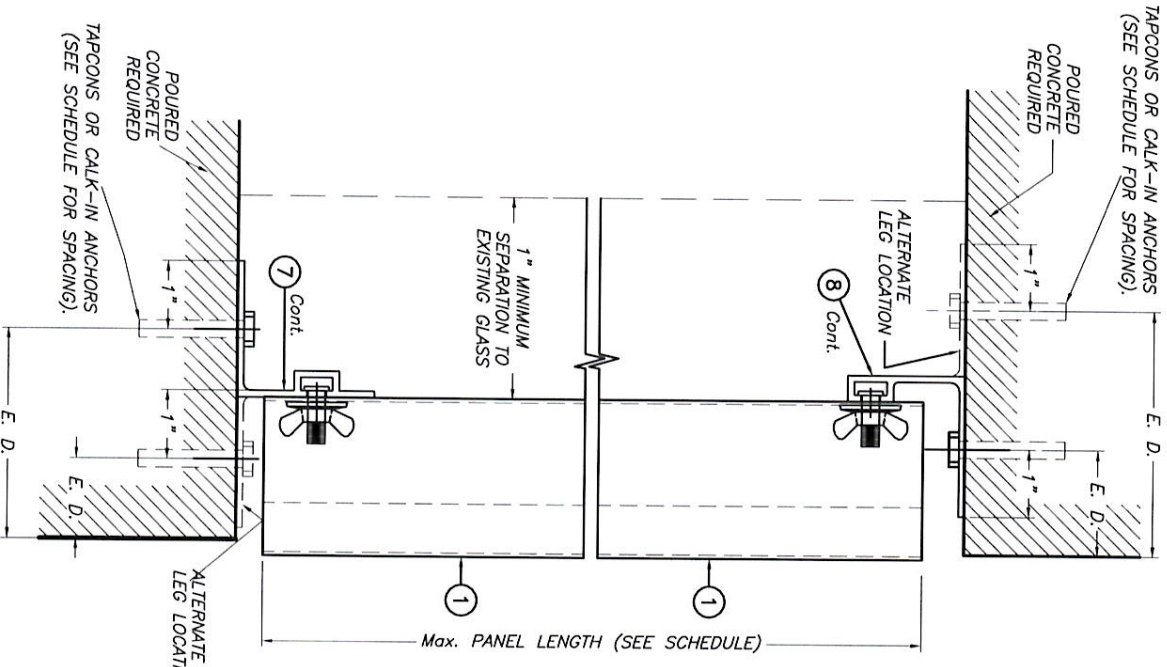
TAPCONS OR CALK-IN ANCHORS (SEE SCHEDULE FOR SPACING)



ALTERNATE CEILING & FLOOR MOUNTING INSTALLATION - SECTION 8A

SCALE : 3/8" = 1"

TAPCONS OR CALK-IN ANCHORS (SEE SCHEDULE FOR SPACING)



CEILING & FLOOR MOUNTING INSTALLATION - SECTION 9

SCALE : 3/8" = 1"

E. D. = EDGE DISTANCE (SEE SCHEDULE ON SHEET 10 OF 15)

NOTE FOR COMBINATION OF SECTIONS :

WALL/FLOOR/CEILING MOUNTING SECTIONS CAN BE COMBINED IN ANY WAY TO SUIT ANY INSTALLATION.

+ SIDE WALK BOLTS ARE 3/4" $\text{\textcircled{2}}$ x 3/32" THICK HEAD MACHINE SCREW W/LENGTH AS PER NOTES A.2 & B.2 (SHEET 1)
+ TRUSS HEAD BOLTS ARE 1/2" $\text{\textcircled{3}}$ x 1/8" THICK HEAD MACHINE SCREW W/LENGTH AS PER NOTES A.2 & B.2 (SHEET 1)



ALTERNATE CEILING & FLOOR MOUNTING INSTALLATION - SECTION 8A
VALID ONLY FOR Max. A.S.D DESIGN PRESSURE RATING OF +70, -75 PSF

© 2017 TILTECO, INC.

TILTECO INC.

TILIT TESTING & ENGINEERING COMPANY
6355 N.W. 36th, Ste. 305, VIRGINIA GARDENS, FL 33166
Phone : (305)971-1530, Fax : (305)971-1531
EB-0006719
WALTER A. TILIT JR., P.E.
FLORIDA Lic. # 44167

FLORIDA BUILDING CODE (Non High Velocity Hurricane Zone)

0.040" BERTHA ALUMINUM STORM PANEL (2.25" DEEP)

EASTERN METAL SUPPLY, INC

4288 WEST ROADS DRIVE
WEST PALM BEACH, FL 33407
PHONE: (561)209-8263, FAX: (561)841-1716

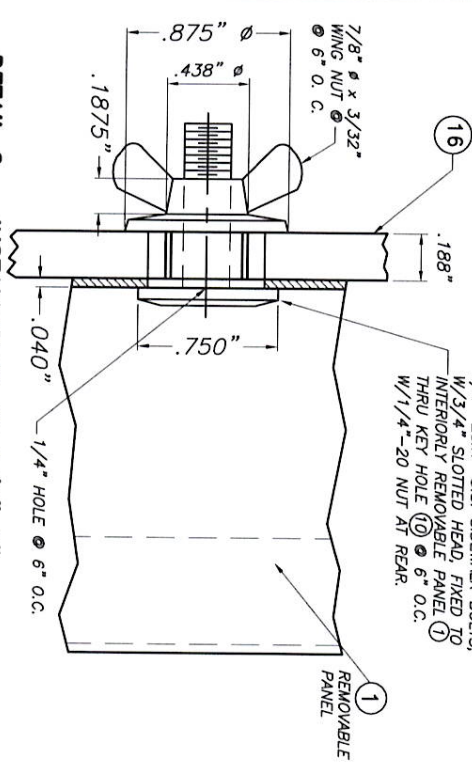
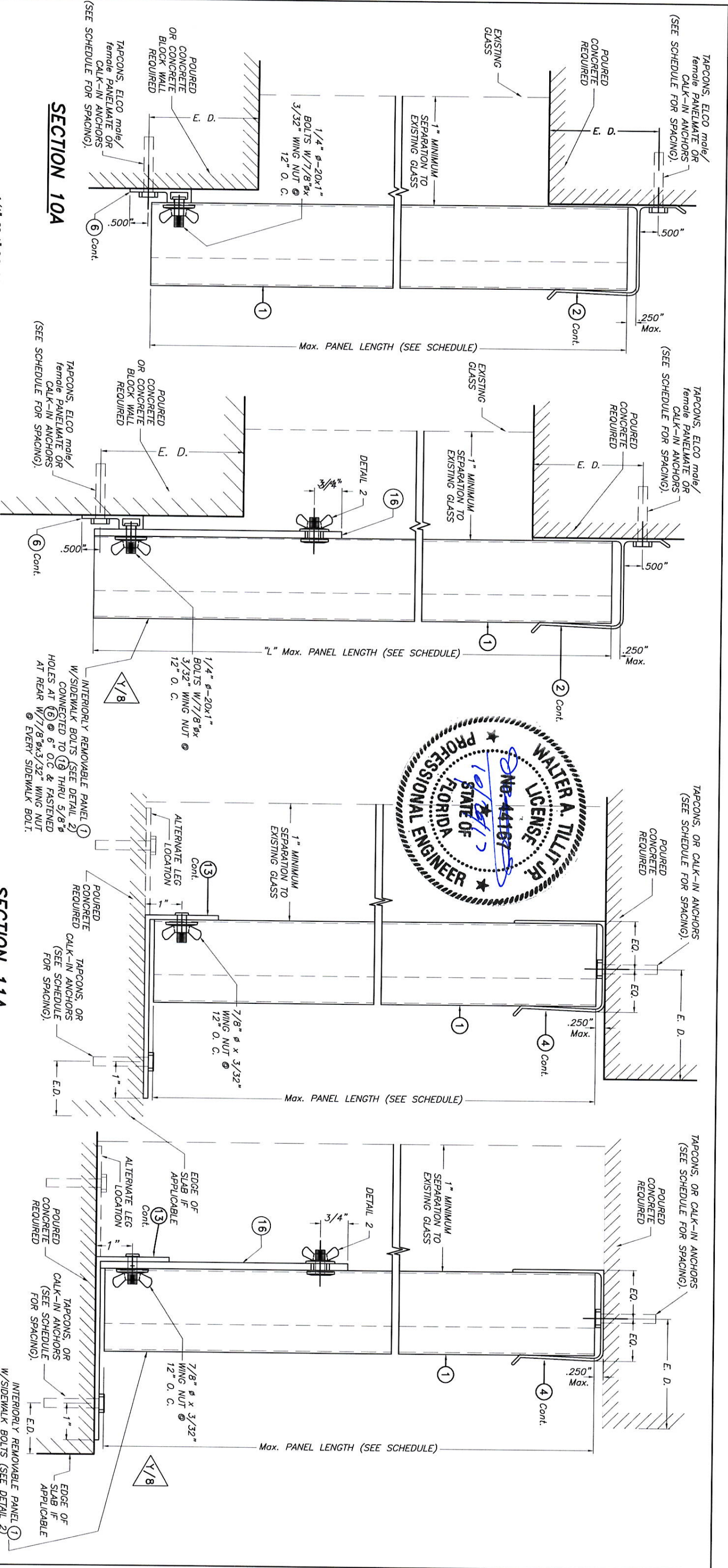
REV. NO	DESCRIPTION	DATE	REV. NO	DESCRIPTION	DATE
1	OLD 15-042	07/25/17	3		
2			4		

L.C.

07/25/17

17-094

SHEET 5 OF 15



WALL MOUNTING INSTALLATIONS
SECTIONS 10
SCALE: 3/8" = 1"

INSTALLATIONS VALID FOR PANELS 1 USED JOINTLY WITH INTERIORLY REMOVABLE PANELS 1

E. D. = EDGE DISTANCE (SEE SCHEDULE ON SHEET 10 OF 15)

NOTE FOR COMBINATION OF SECTIONS:
WALL/FLOOR/CEILING MOUNTING SECTIONS CAN BE COMBINED IN ANY WAY TO SUIT ANY INSTALLATION.

© 2017 TILTECO, INC.

TILTECO inc.

TILIT TESTING & ENGINEERING COMPANY
6365 N.W. 35th St. Ste. 305, Vero Beach, FL 33586
Phone: (305) 971-1530, Fax: (305) 971-1531
EB-00062719
WALTER A. TILIT JR., P.E.
FLORIDA LIC. # 44187

FLORIDA BUILDING CODE (Non High Velocity Hurricane Zone)

0.040" BERTHA ALUMINUM STORM PANEL (2.25" DEEP)

EASTERN METAL SUPPLY, INC.

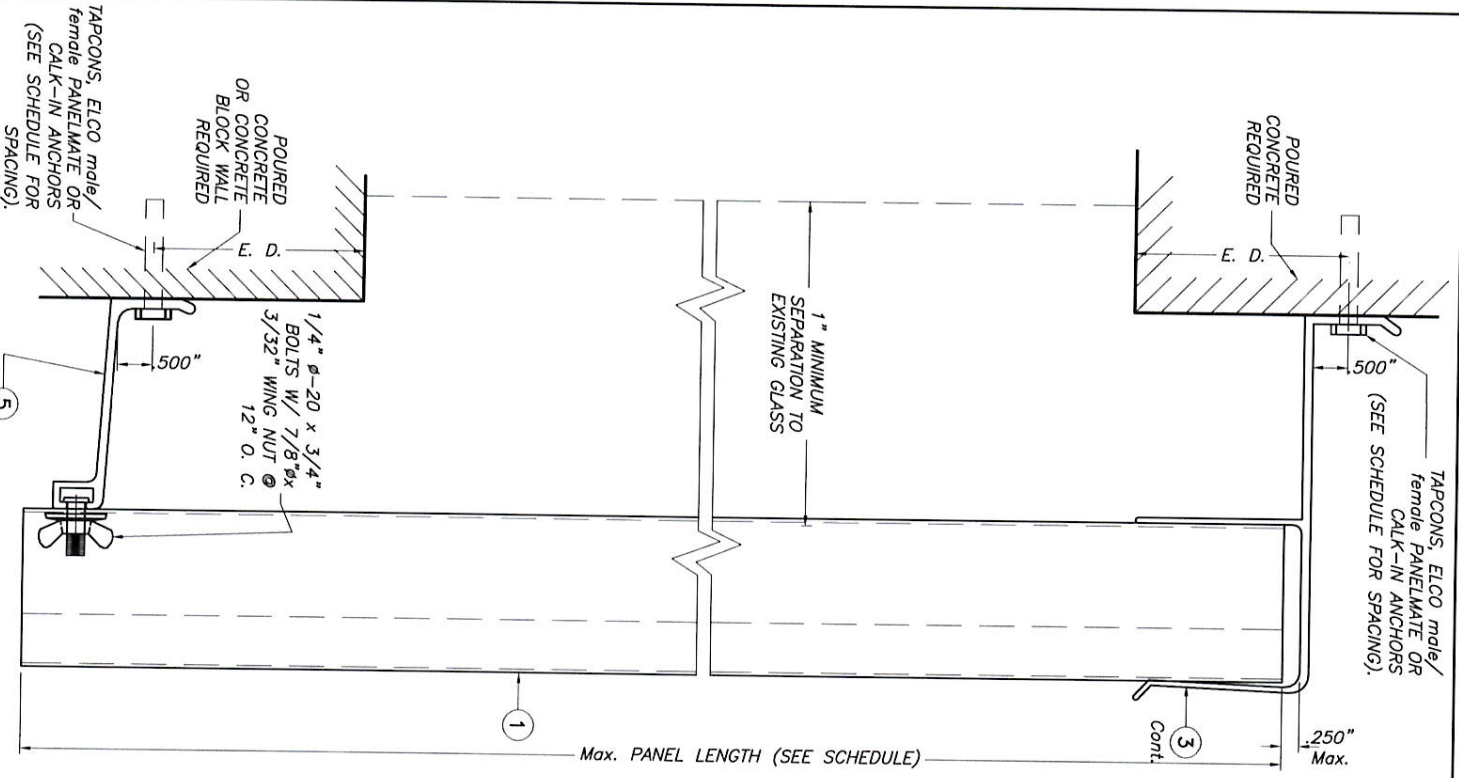
4268 WEST ROADS DRIVE
WEST PALM BEACH, FL 33407
PHONE: (561) 209-8263, FAX: (561) 941-1716

07/25/17
DRAWN BY:
DATE:

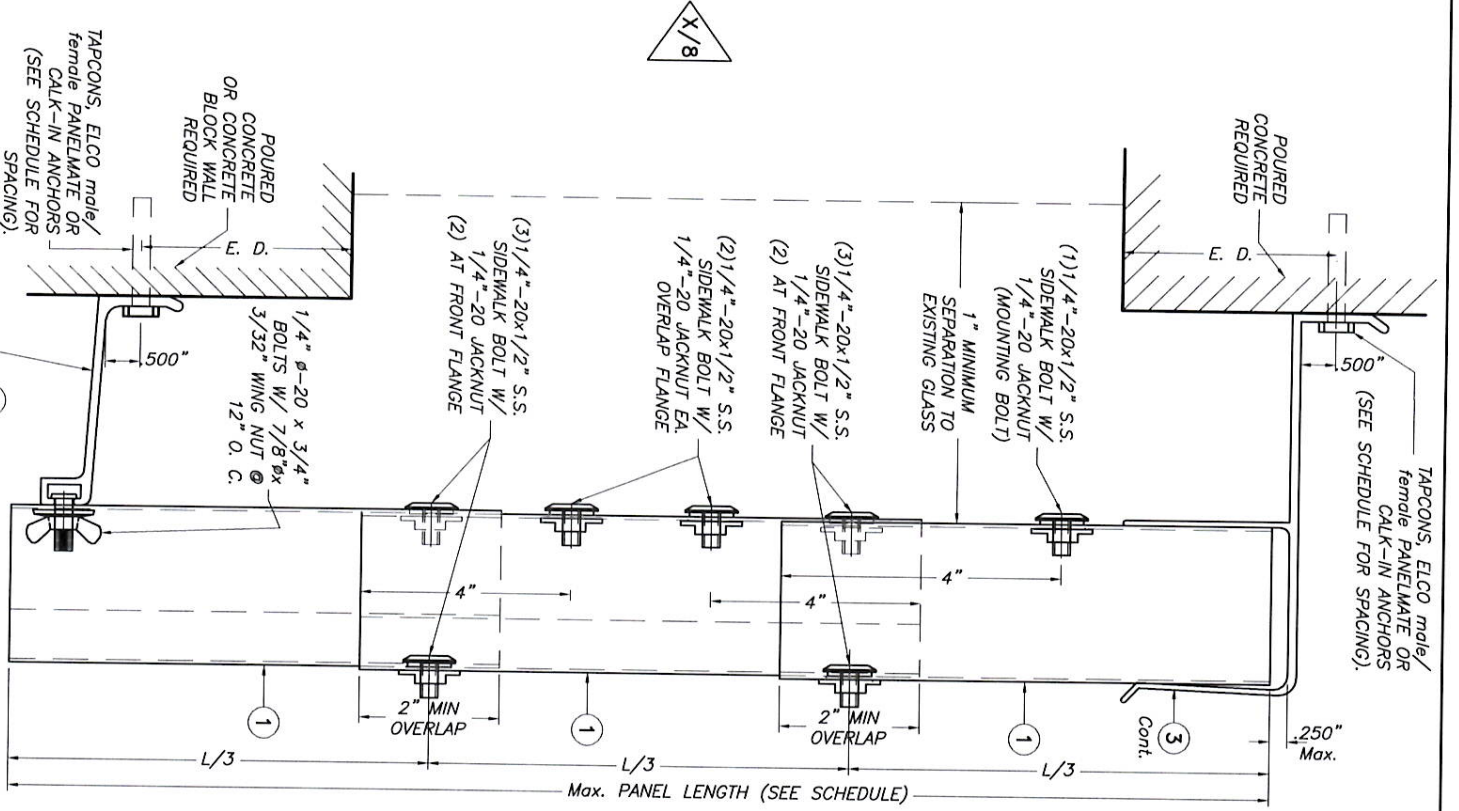
17-094
DRAWING NO.

REV. NO.	DESCRIPTION	DATE	REV. NO.	DESCRIPTION	DATE
1	OLD 15-042	07/25/17	3		
2			4		

SHEET 6 OF 15



SECTIONS 12A



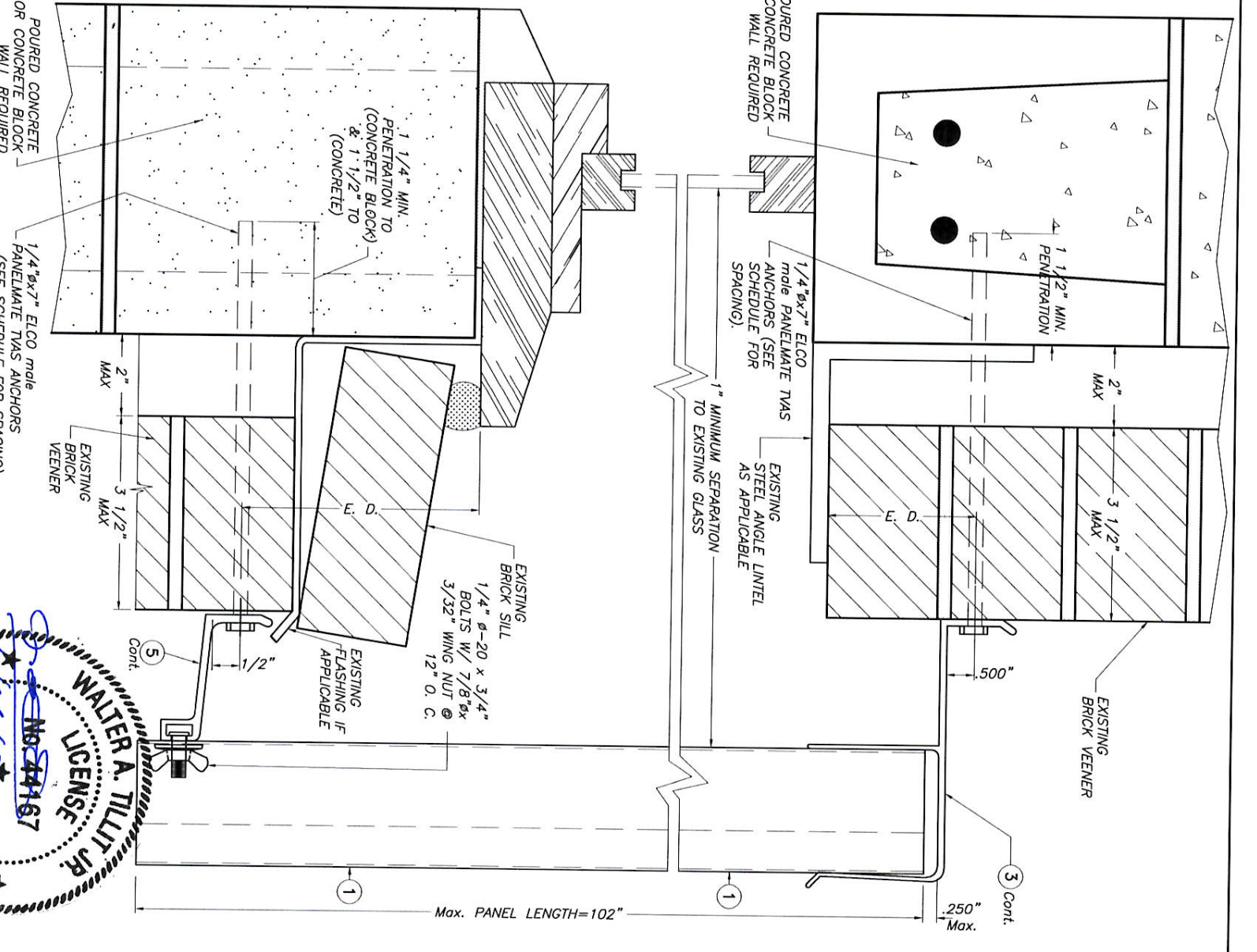
SECTIONS 12B

WALL MOUNTING INSTALLATIONS

INSTALLATIONS VALID FOR PANELS ① USED JOINTLY WITH INTERIORLY REMOVABLE PANELS ①

E. D. = EDGE DISTANCE (SEE SCHEDULE ON SHEETS 10 OF 15)

NOTE FOR COMBINATION OF SECTIONS: WALL/FLOOR/CEILING MOUNTING SECTIONS CAN BE COMBINED IN ANY WAY TO SUIT ANY INSTALLATION.



SECTION 13

FLORIDA BUILDING CODE (Non High Rise/One/Fourth Zone)

0.040" BERTHA ALUMINUM STORM PANEL (2.25" DEEP)



TILLIT TESTING & ENGINEERING COMPANY
6355 N.W. 35th St., Ft. Lauderdale, FL 33309
Phone: (754) 971-1530 Fax: (754) 971-1531
WALTER A. TILLIT, P.E.
FLORIDA LIC. # 44167

EASTERN METAL SUPPLY, INC.
4268 WEST ROADS DRIVE
WEST PALM BEACH, FL 33407
PHONE: (561) 209-8263 FAX: (561) 841-1716

REV. No.	DESCRIPTION	DATE	REV. No.	DESCRIPTION	DATE
1	GLD 15-042	07/25/17	3		
2			4		



07/25/17
DATE:
DRAWN BY:
L.C.

17-094
DRAWING No.
SHEET 7 OF 15

MAXIMUM A.S.D. DESIGN PRESSURE RATING (p.s.f.) WITH CORRESPONDING MAXIMUM PANEL LENGTH "L" (FT.) AND CORRESPONDING ANCHOR SPACING "S" (IN.) SCHEDULE FOR INSTALLATIONS IN CONCRETE, CONCRETE BLOCK AND WOOD FRAME STRUCTURES *

MAXIMUM A.S.D. DESIGN PRESSURE RATING (p.s.f.)	Max. PANEL LENGTH L (FT.)				Max. ANCHOR SPACING S (in.) PANELS ①**
	SECTIONS: 1, 3, 4, 7, 8, 9a, 9, 11	SECTIONS: 2, 5, 10	SECTION: 12	SECTION: 13	
+25.0, -25.0	12'-0"	12'-0"	11'-9"	8'-6"	12"++
+25.0, -30.0	12'-0"	11'-5"	10'-9"	8'-6"	12"++
+30.0, -35.0	11'-1"	10'-6"	9'-11"	8'-6"	12"++
+35.0, -40.0	10'-5"	9'-10"	9'-4"	8'-6"	12"++
+40.0, -45.0	9'-10"	9'-4"	8'-9"	8'-6"	12"++
+45.0, -50.0	9'-4"	8'-10"	8'-4"	8'-6"	12"++
+50.0, -55.0	8'-10"	8'-5"	7'-11"	-	12"++
+55.0, -60.0	8'-6"	8'-1"	7'-7"	-	12"++
+60.0, -65.0	8'-0"	7'-9"	7'-4"	-	12"++
+65.0, -70.0	7'-5"	7'-5"	7'-0"	-	12"++
+70.0, -75.0	6'-11"	6'-11"	6'-9"	-	12"++
+75.0, -80.0	6'-6"	6'-6"	6'-6"	-	12"
+80.0, -85.0	6'-1"	6'-1"	6'-1"	-	12"
+85.0, -90.0	5'-9"	5'-9"	5'-9"	-	12"
+90.0, -95.0	5'-6"	5'-6"	5'-6"	-	12"
+95.0, -100.0	5'-2"	5'-2"	5'-2"	-	12"
+100.0, -105.0	4'-11"	4'-11"	4'-11"	-	12"
+105.0, -110.0	4'-9"	4'-9"	4'-9"	-	12"
+110.0, -115.0	4'-6"	4'-6"	4'-6"	-	12"
+115.0, -120.0	4'-4"	4'-4"	4'-4"	-	12"
+120.0, -125.0	4'-2"	4'-2"	4'-2"	-	12"
+125.0, -130.0	4'-0"	4'-0"	4'-0"	-	12"

† SECTION 8A IS ONLY VALID FOR MAX. A.S.D. DESIGN PRESSURE RATING UP TO +70, -75 PSF.
 †† Max. ANCHOR SPACING FOR SECTION 8A SHALL BE 6" O.C.

NOTE: MINIMUM PANEL LENGTH IS 3'-0".

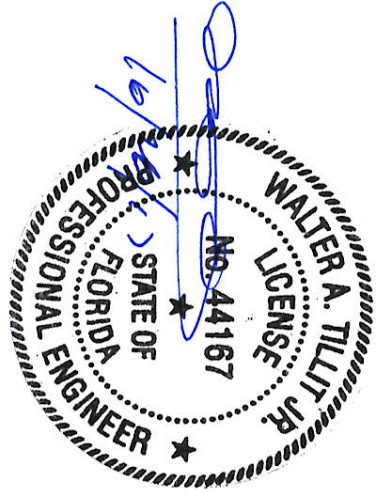
** MAXIMUM ANCHOR SPACINGS ARE VALID FOR 3 1/2" EDGE DISTANCE. FOR E. D. LESS THAN 3 1/2", REDUCE ANCHOR SPACING BY MULTIPLYING SPACING SHOWN ON SCHEDULE BY THE FOLLOWING FACTORS. (NOTE: Min. E. D. FOR CALK-IN ANCHORS IS 2 1/2"). FOR THIS OPERATION TO BE POSSIBLE, REDUCED SPACING OBTAINED USING FACTOR SHALL NOT BE LESS THAN MINIMUM SPACING INDICATED FOR EACH ANCHOR TYPE AT ANCHORS LEGEND.

ACTUAL E. D.	FACTOR		
	PANELMATES	TAPCON	SLID-SET
3"	.86	-	.78
2 1/2"	.71	-	.50
2"	.50	-	-
1 1/2"	-	.35	-

ANCHORS LEGEND

ANCHORS TYPE	ANCHOR MIN. SPACING
TAPCON/PANELMATES	3.0"
CALK-IN	2.5"
SOLID-SET	3.5"

* SEE NOTES ON SHEET 11 THRU 15 OF 15 FOR PANEL LENGTH LIMITATIONS FOR FLOOR/CEILING INSTALLATIONS INTO WOOD FRAME BUILDINGS.



© 2017 TILTECO, INC.

TILTECO inc.

TILIT TESTING & ENGINEERING COMPANY
 6365 N.W. 36th St. Suite 505 Fort Lauderdale, FL 33368
 Phone: (305)971-1530 Fax: (305)971-1531
 EB-0006719
 WALTER A. TILIT JR., P.E.
 FLORIDA Lic. # 44167

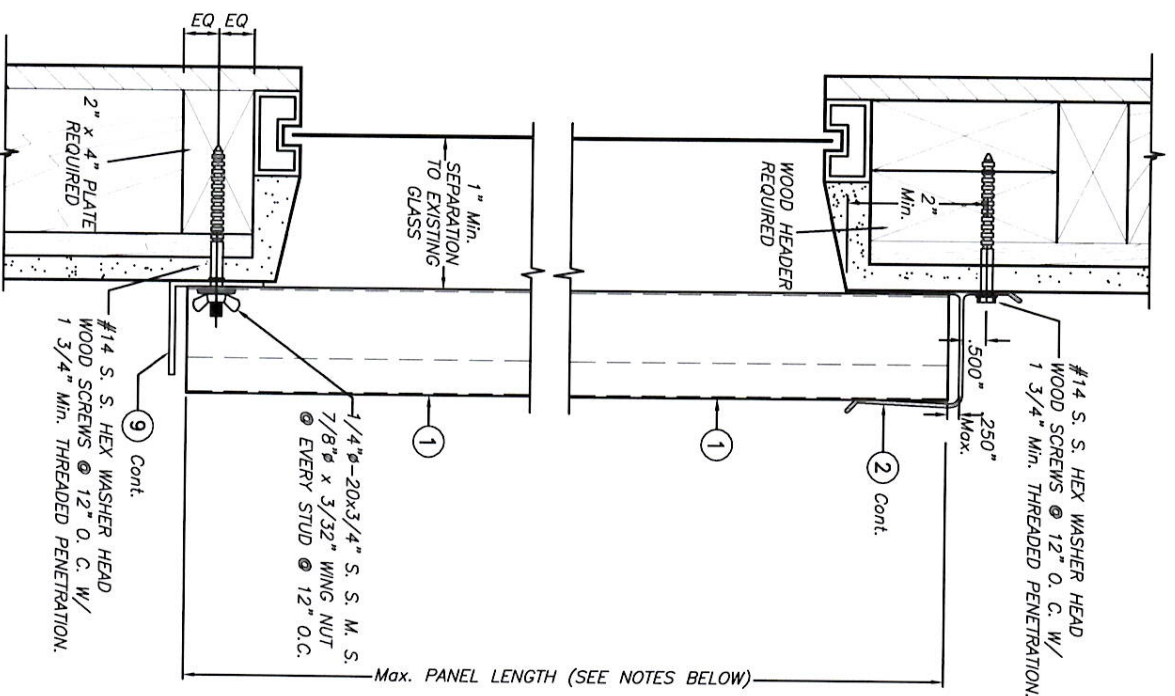
FLORIDA BUILDING CODE (Non High Velocity Hurricane Zone)
 0.040" BERTHA ALUMINUM STORM PANEL (2.25" DEEP)

EASTERN METAL SUPPLY, INC.

4268 WEST ROADS DRIVE
 WEST PALM BEACH, FL 33407
 PHONE: (561)209-8263 FAX: (561)841-1716

L.C. DRAWN BY:
 07/25/17 DATE:
 17-094 DRAWING No.
 SHEET 10 OF 15

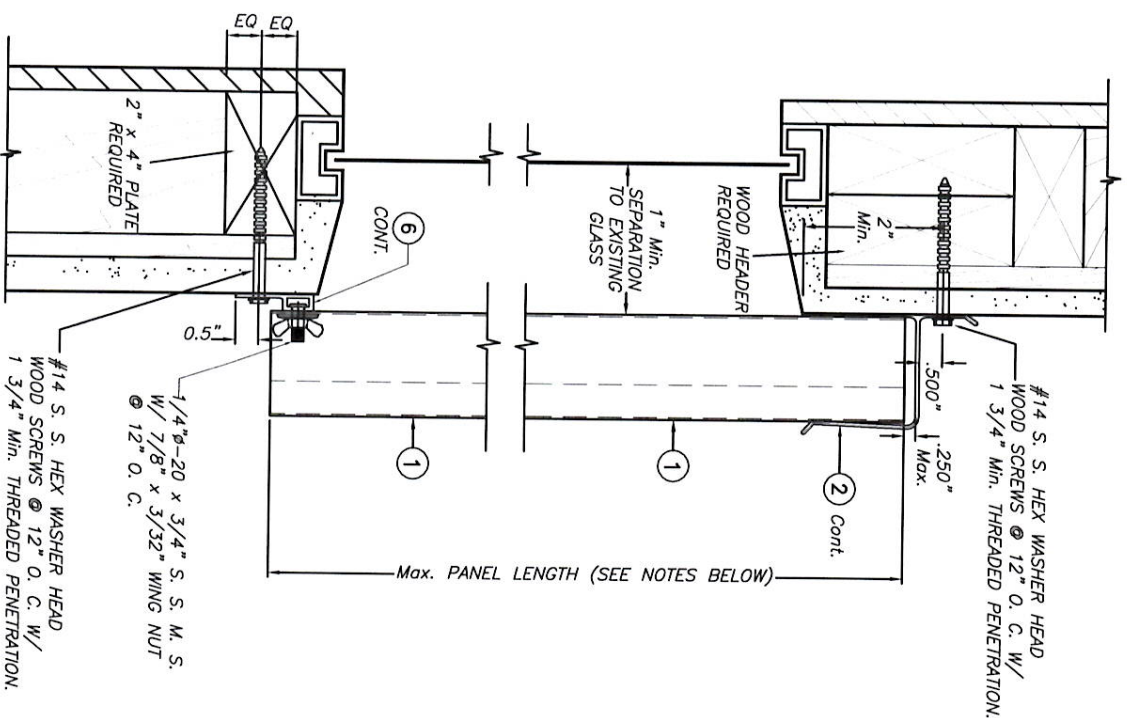
REV. No	DESCRIPTION	DATE	REV. No	DESCRIPTION	DATE
1	QLD 15-042	07/25/17	3		
2			4		



**WALL MOUNTING INSTALLATION
ALTERNATIVE 1**
SCALE: 1/4" = 1"

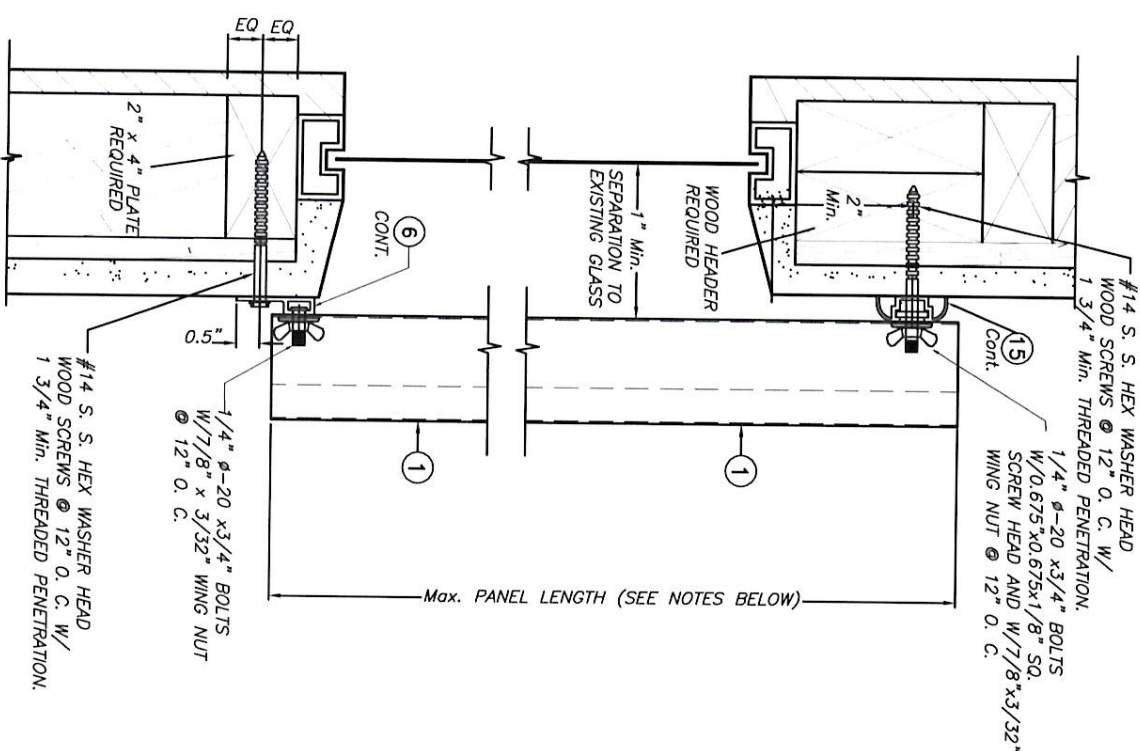
NOTE FOR COMBINATION OF SECTIONS:
WALL MOUNTING SECTIONS CAN BE COMBINED
IN ANY WAY TO SUIT ANY INSTALLATION.

- NOTES:
- INSTALLATIONS ARE ONLY VALID FOR MAX. A.S.D. DESIGN PRESSURE RATING AND Max. PANEL LENGTH AS PER SCHEDULES SHOWN ON SHEET 10 OF 15 EXCEPT THAT PANEL'S LENGTHS FOR FLOOR/CEILING INSTALLATIONS SHALL BE LIMITED TO 109"
 - FOR WOOD FRAME CONSTRUCTION: WOOD MEMBERS TO BE SOUTHERN PINE No. 2, W/ SPECIFIC DENSITY OF 0.55 OR EQUAL.

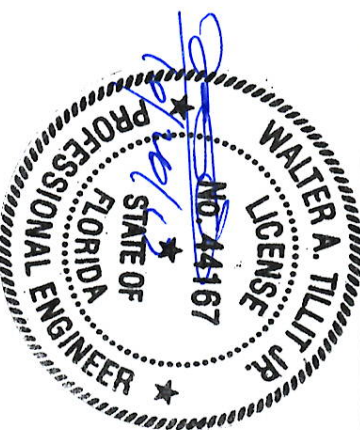


**WALL MOUNTING INSTALLATION
ALTERNATIVE 2**
SCALE: 1/4" = 1"

INSTALLATION DETAILS ON EXISTING WOOD BUILDINGS



**WALL MOUNTING INSTALLATION
ALTERNATIVE 3**
SCALE: 1/4" = 1"



© 2017 TILTECO, INC.

TILTECO INC.

TILIT TESTING & ENGINEERING COMPANY
6355 N.W. 35th St. Ste. 505
Phone: (305) 971-1530 Fax: (305) 971-1531
EG-0006719
WALTER A. TILIT JR., P.E.
FLORIDA LIC. # 44167

FLORIDA BUILDING CODE (Non High Velocity Hurricane Zone)

0.040" BERTHA ALUMINUM STORM PANEL
(2.25" DEEP)

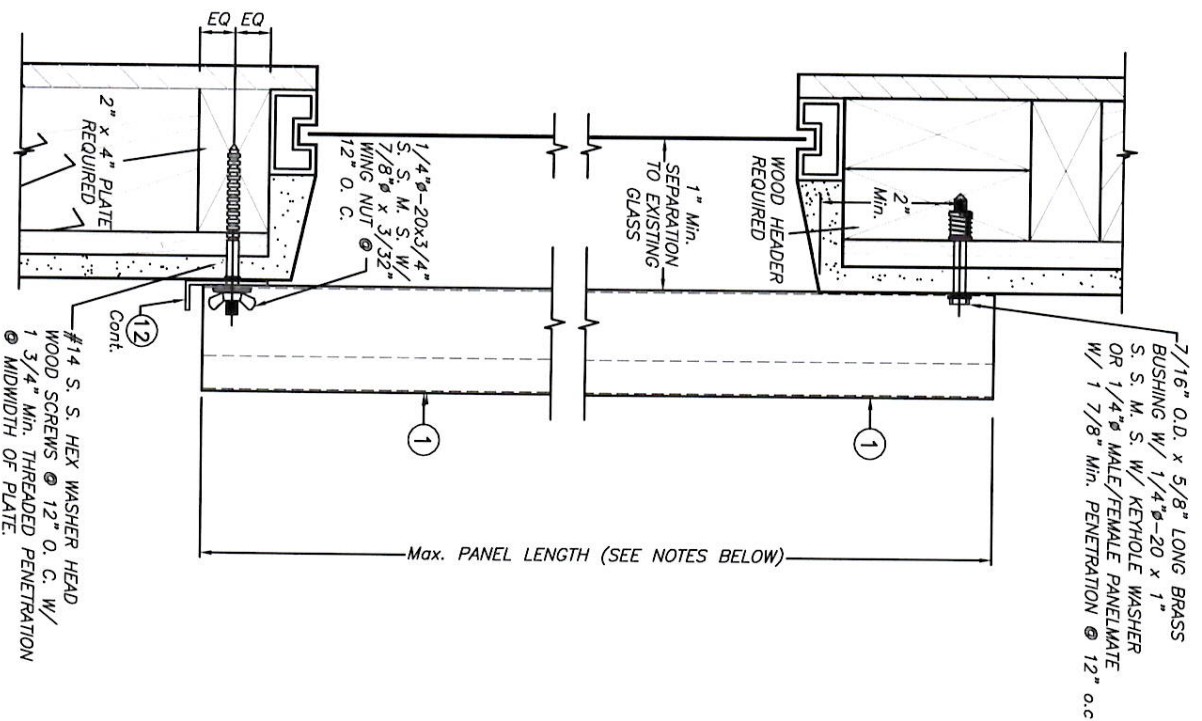
EASTERN METAL SUPPLY, INC.

4268 WEST ROADS DRIVE
WEST PALM BEACH, FL 33407
PHONE: (561) 209-8263 FAX: (561) 841-1716

07/25/17
DATE: 17-094
DRAWING No.

REV. No.	DESCRIPTION	DATE	REV. No.	DESCRIPTION	DATE
1	QLD 15-042	07/25/17	3		
2			4		

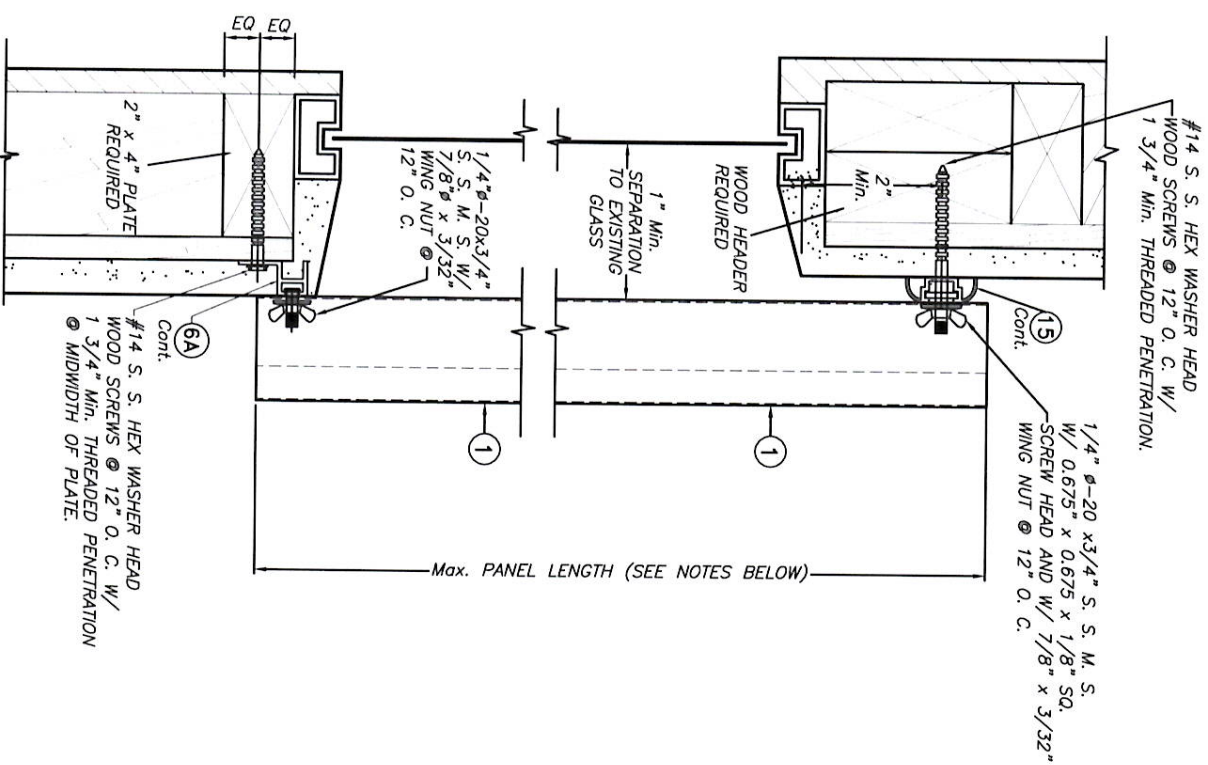
SHEET 11 OF 15



**WALL MOUNTING INSTALLATION
ALTERNATIVE 4** SCALE: 1/4" = 1"

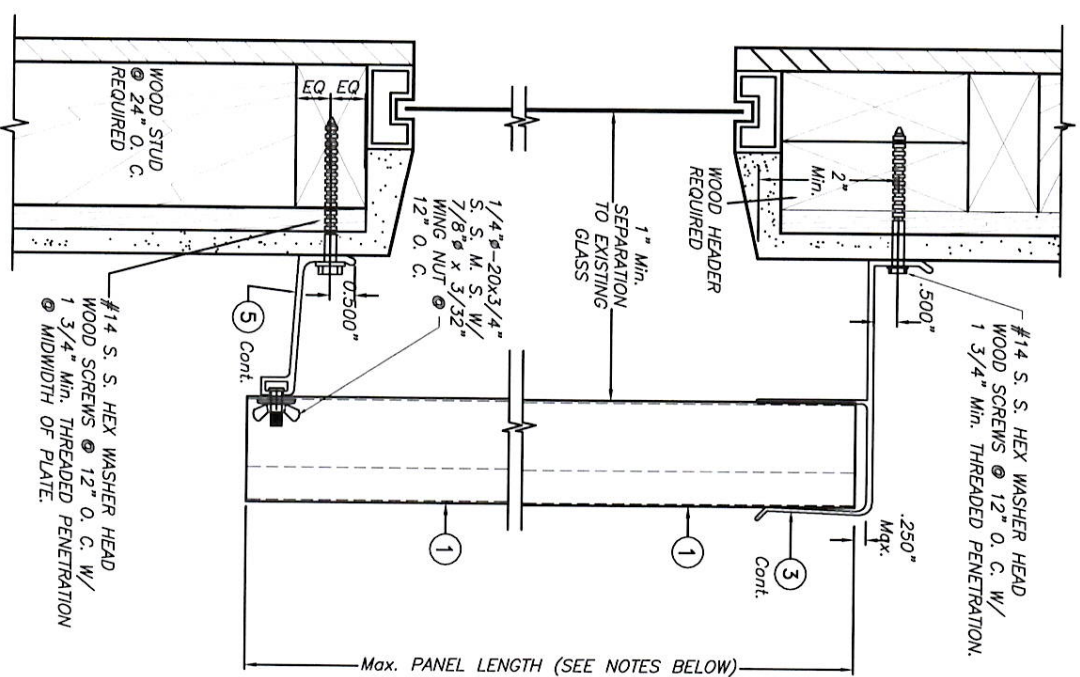
NOTE FOR COMBINATION OF SECTIONS:
WALL MOUNTING SECTIONS CAN BE COMBINED
IN ANY WAY TO SUIT ANY INSTALLATION.

- NOTES:
- INSTALLATIONS ARE ONLY VALID FOR MAX. ASD. DESIGN PRESSURE RATING AND MAX. PANEL LENGTH AS PER SCHEDULES SHOWN ON SHEET 10 OF 15 EXCEPT THAT PANEL'S LENGTHS FOR FLOOR/CEILING INSTALLATIONS SHALL BE LIMITED TO 109"
 - FOR WOOD FRAME CONSTRUCTION: WOOD MEMBERS TO BE SOUTHERN PINE No. 2, W/ SPECIFIC DENSITY OF 0.55 OR EQUAL.

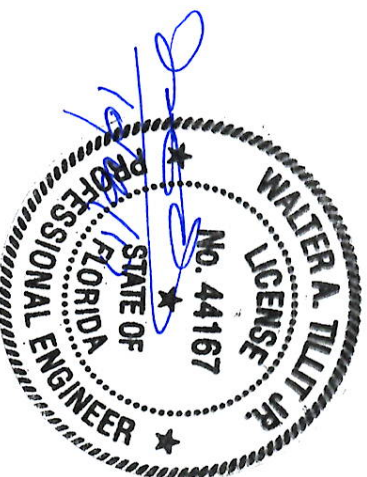


**WALL MOUNTING INSTALLATION
ALTERNATIVE 5** SCALE: 1/4" = 1"

INSTALLATION DETAILS ON EXISTING WOOD BUILDINGS



**BUILD OUT INSTALLATION
ALTERNATIVE 6** SCALE: 1/4" = 1"



© 2017 TILTECO, INC.

TILTECO INC.

TILLIT TESTING & ENGINEERING COMPANY
6355 N.W. 38th St., Ste. 305, Virginia Gardens, FL 33166
Phone: (305)971-1530, Fax: (305)971-1531
EB-0006719
WALTER A. TILLIT JR., P.E.
FLORIDA LIC. # 44167

FLORIDA BUILDING CODE (Non High Velocity Hurricane Zone)
0.040" BERTHA ALUMINUM STORM PANEL (2.25" DEEP)

EASTERN METAL SUPPLY, INC.

4288 WEST ROADS DRIVE
WEST PALM BEACH, FL 33407
PHONE: (561)209-8263, FAX: (561)841-1716

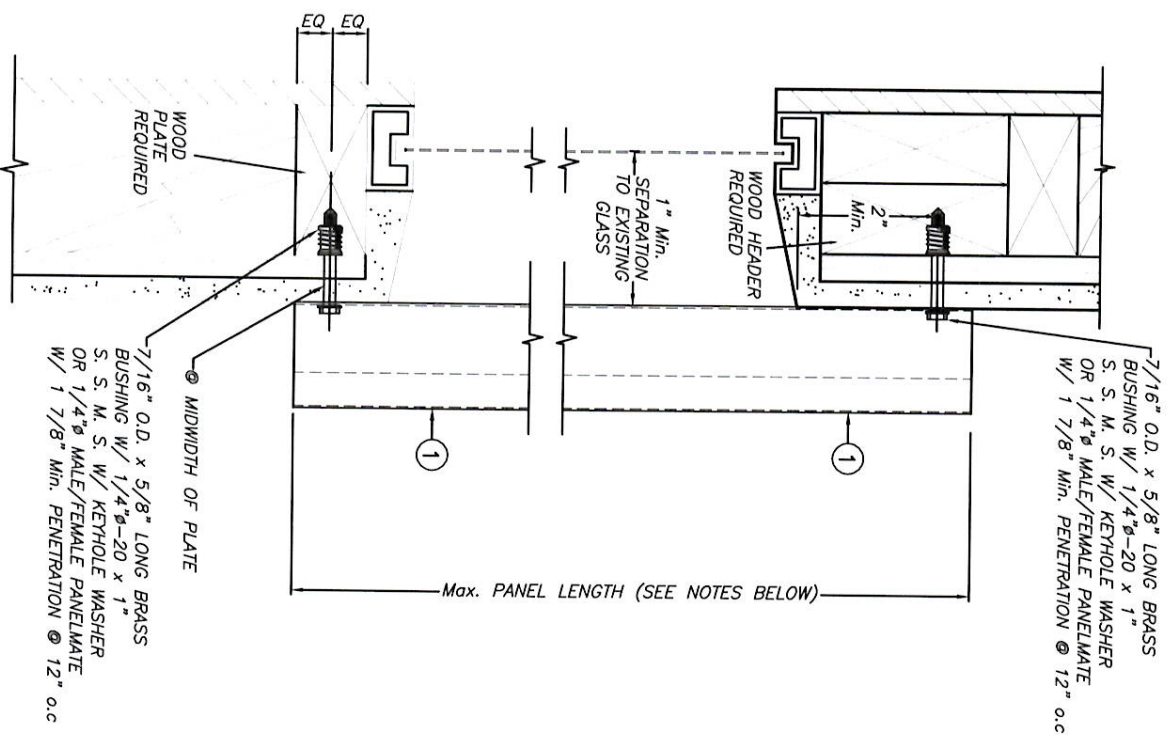
17-094
DRAWING NO

07/25/17
DATE

L.C.
DRAWN BY:

REV. NO.	DESCRIPTION	DATE	REV. NO.	DESCRIPTION	DATE
1	OLD 15-042	07/25/17	3		
2			4		

SHEET 12 OF 15



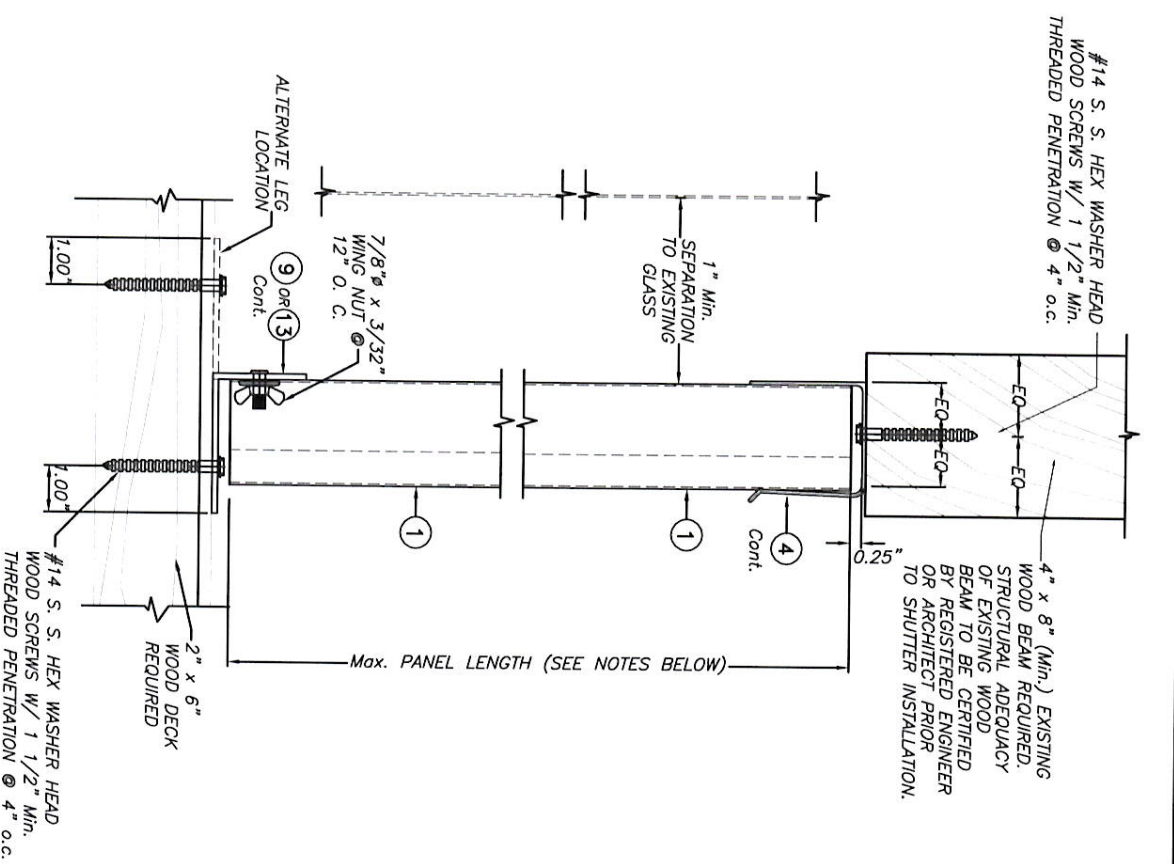
**WALL MOUNTING INSTALLATION (D.M.)
ALTERNATIVE 7**

SCALE: 1/4" = 1"

NOTE FOR COMBINATION OF SECTIONS:
WALL MOUNTING SECTIONS CAN BE COMBINED
IN ANY WAY TO SUIT ANY INSTALLATION.

NOTES:

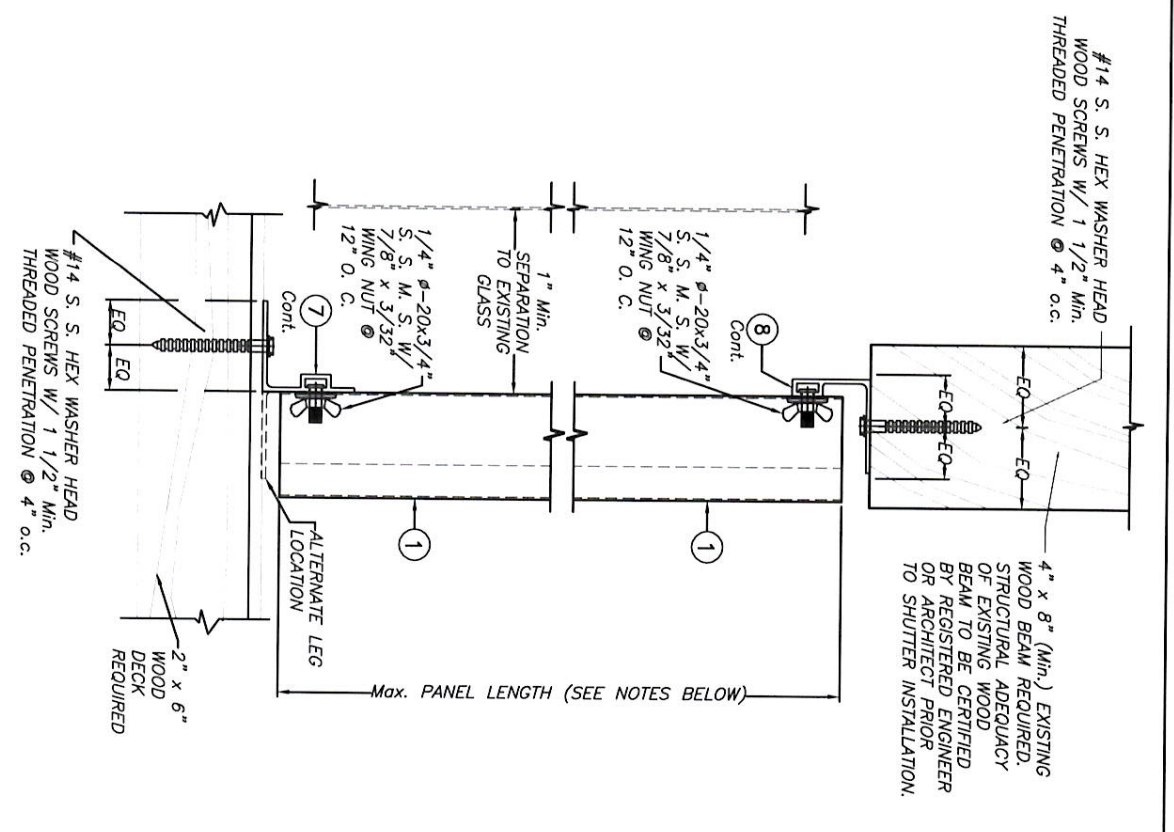
- INSTALLATIONS ARE ONLY VALID FOR MAX. A.S.D. DESIGN PRESSURE RATING AND Max. PANEL LENGTH AS PER SCHEDULES SHOWN ON SHEET 10 OF 15 EXCEPT THAT PANEL'S LENGTHS FOR FLOOR/CEILING INSTALLATIONS SHALL BE LIMITED TO 109"
- FOR WOOD FRAME CONSTRUCTION: WOOD MEMBERS TO BE SOUTHERN PINE No. 2, W/ SPECIFIC DENSITY OF 0.55 OR EQUAL.



**CEILING & FLOOR MOUNTING INSTALLATION
ALTERNATIVE 8**

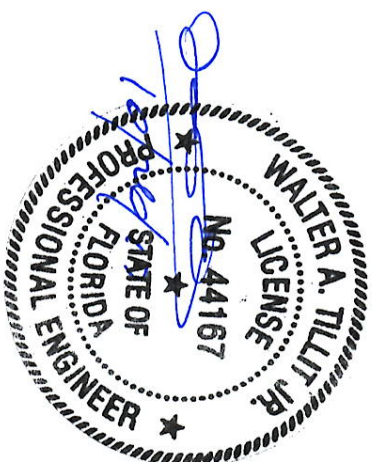
SCALE: 1/4" = 1"

INSTALLATION DETAILS ON EXISTING WOOD BUILDINGS



**CEILING & FLOOR MOUNTING INSTALLATION
ALTERNATIVE 9**

SCALE: 1/4" = 1"



© 2017 TILTECO, INC.

TILTECO INC.

TILLIT TESTING & ENGINEERING COMPANY
6335 N.W. 36th St., Ste. 305, Virginia Gardens, Ft. 33166
Phone: (305)971-1530, Fax: (305)971-1531
EB-0006719
WALTER A. TILLIT JR., P.E.
FLORIDA Lic. # 44167

EASTERN METAL SUPPLY, INC.
4288 WEST ROADS DRIVE
WEST PALM BEACH, FL. 33407
PHONE: (561)209-8263, FAX: (561)841-1716

FLORIDA BUILDING CODE (Non High Velocity Hurricane Zone)
0.040" BERTHA ALUMINUM STORM PANEL (2.25" DEEP)

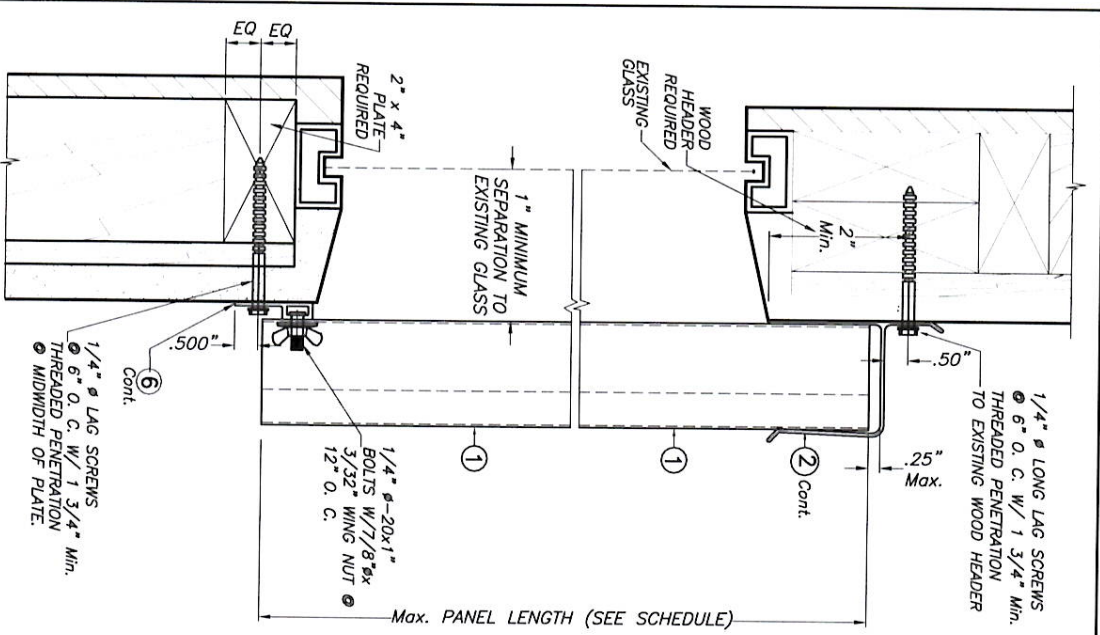
L.C.
DRAWN BY:

07/25/17
DATE:

17-094
DRAWING NO

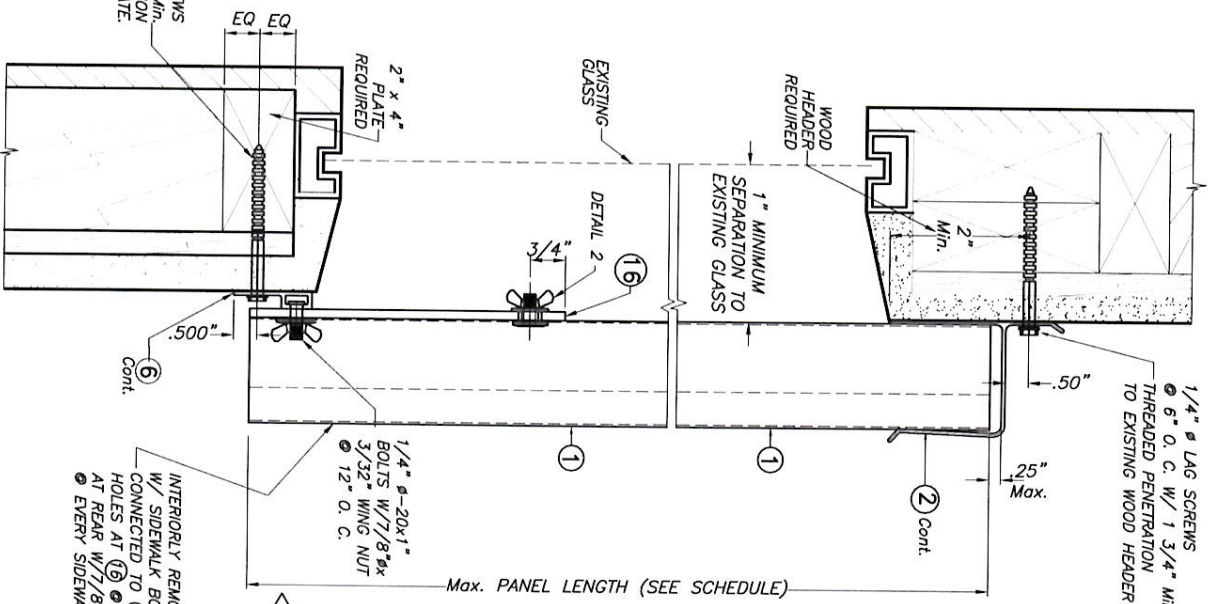
REV. NO	DESCRIPTION	DATE	REV. NO	DESCRIPTION	DATE
1	OLD 15-042	07/28/17	3		
2			4		

SHEET 13 OF 15



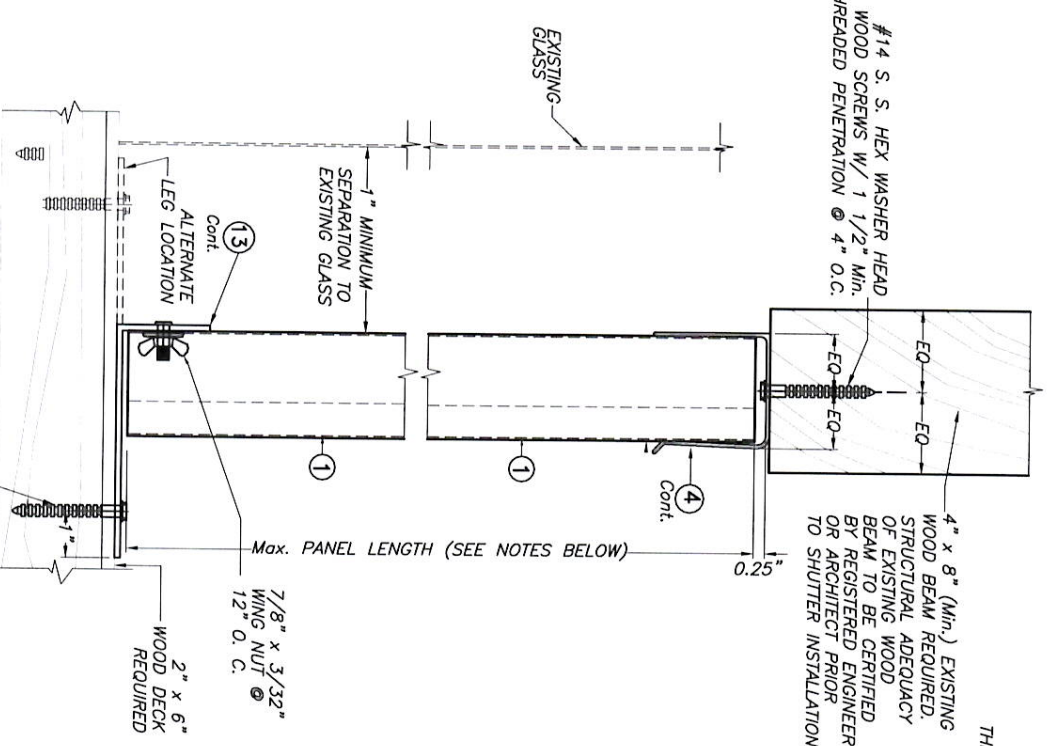
ALTERNATIVE 10A
SCALE: 3/8" = 1"

WALL MOUNTING INSTALLATIONS
SECTIONS 10

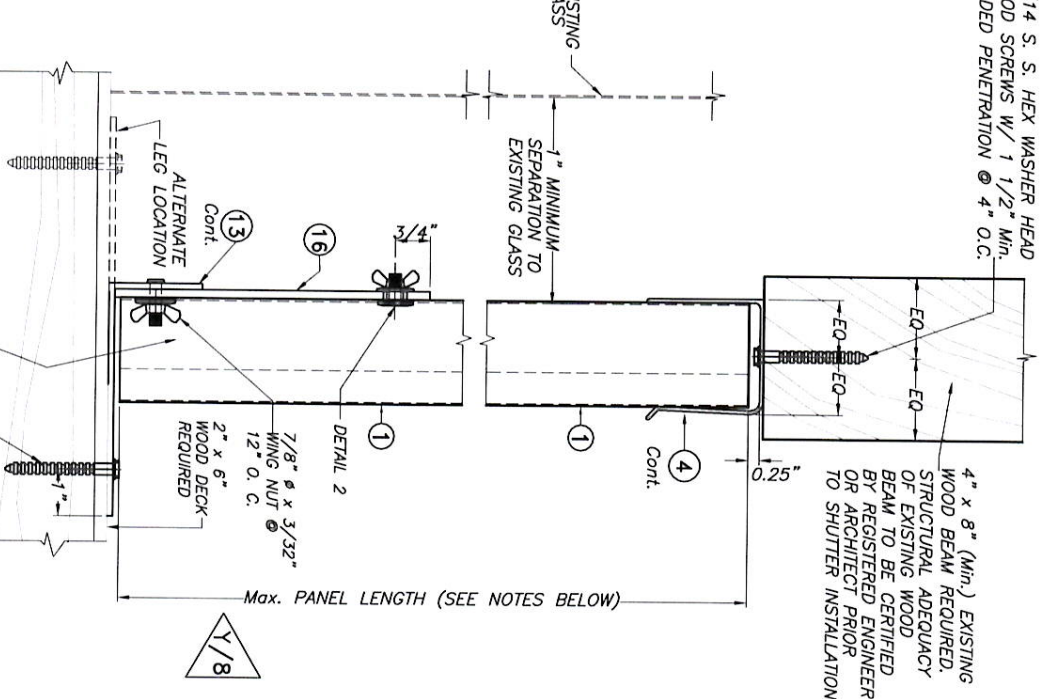


ALTERNATIVE 10B
SCALE: 3/8" = 1"

INSTALLATION DETAILS ON EXISTING WOOD BUILDINGS
VALID FOR PANELS 1 USED JOINTLY
WITH INTERIORLY REMOVABLE PANELS 1



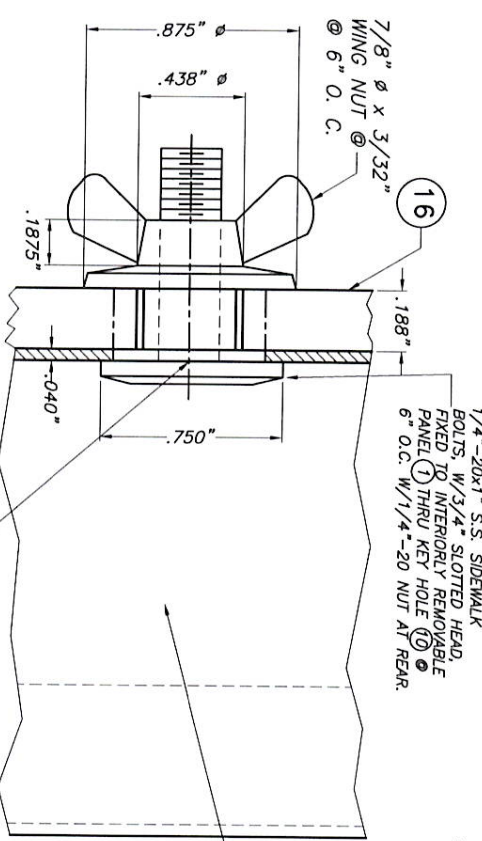
ALTERNATIVE 11A



ALTERNATIVE 11B

CEILING & FLOOR MOUNTING INSTALLATIONS
SECTIONS 11

SCALE: 1/4" = 1"



DETAIL 2 - INSTALLATION OF 1/4" X 1" SIDEWALK BOLTS - REMOVABLE PANEL

1
REMOVABLE PANEL

NOTE FOR COMBINATION OF SECTIONS:
WALL MOUNTING SECTIONS CAN BE COMBINED IN ANY WAY TO SUIT ANY INSTALLATION.

NOTES:

- INSTALLATIONS ARE ONLY VALID FOR MAX. A.S.D. DESIGN PRESSURE RATING AND MAX. PANEL LENGTH AS PER SCHEDULES SHOWN ON SHEET 10 OF 15 EXCEPT THAT PANEL'S LENGTHS FOR FLOOR/CEILING INSTALLATIONS SHALL BE LIMITED TO 109"
- FOR NEW WOOD FRAME CONSTRUCTION: WOOD MEMBERS TO BE SOUTHERN PINE No. 2, W/ SPECIFIC DENSITY OF 0.55 OR EQUAL.



TILIT TESTING & ENGINEERING COMPANY
6355 N.W. 35th, Ste. 305, Virginia Gardens, FL 33166
Phone: (305)971-1530, Fax: (305)971-1531
EB-0006719
WALTER A. TILLIT JR., P.E.
FLORIDA LIC. # 44167

FLORIDA BUILDING CODE (Non High Velocity Hurricane Zone)
0.040" BERTHA ALUMINUM STORM PANEL (2.25" DEEP)

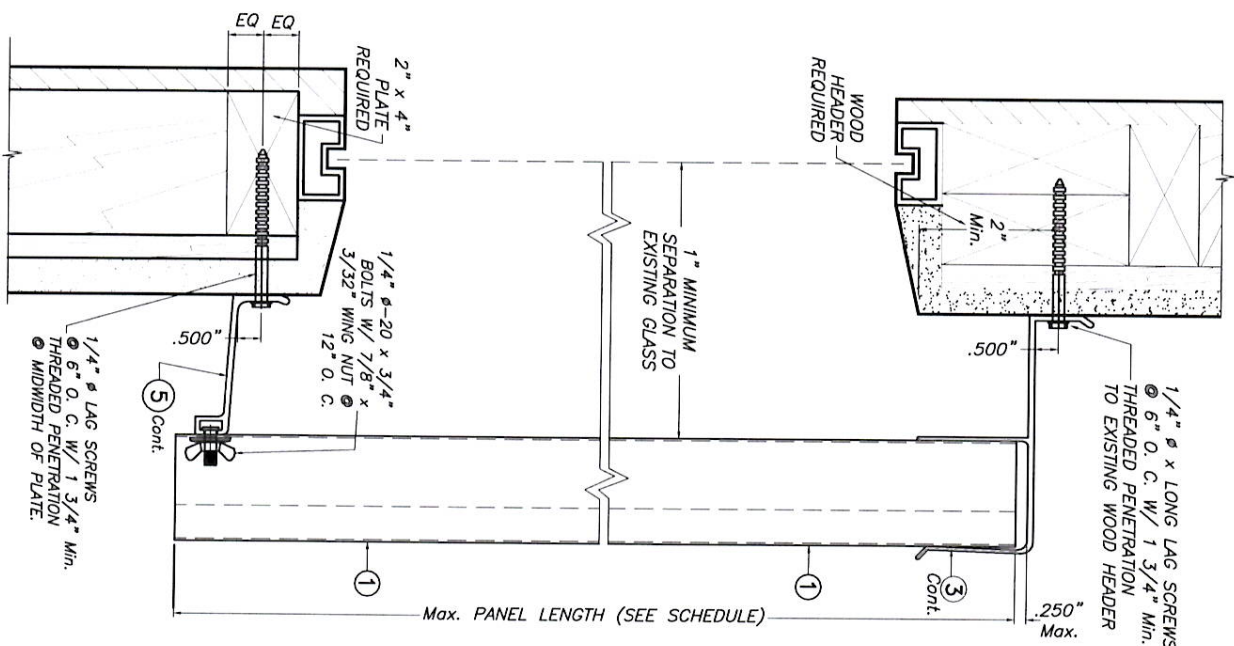
EASTERN METAL SUPPLY, INC

4268 WEST ROADS DRIVE
WEST PALM BEACH, FL 33407
PHONE: (561)209-8263, FAX: (561)841-1716

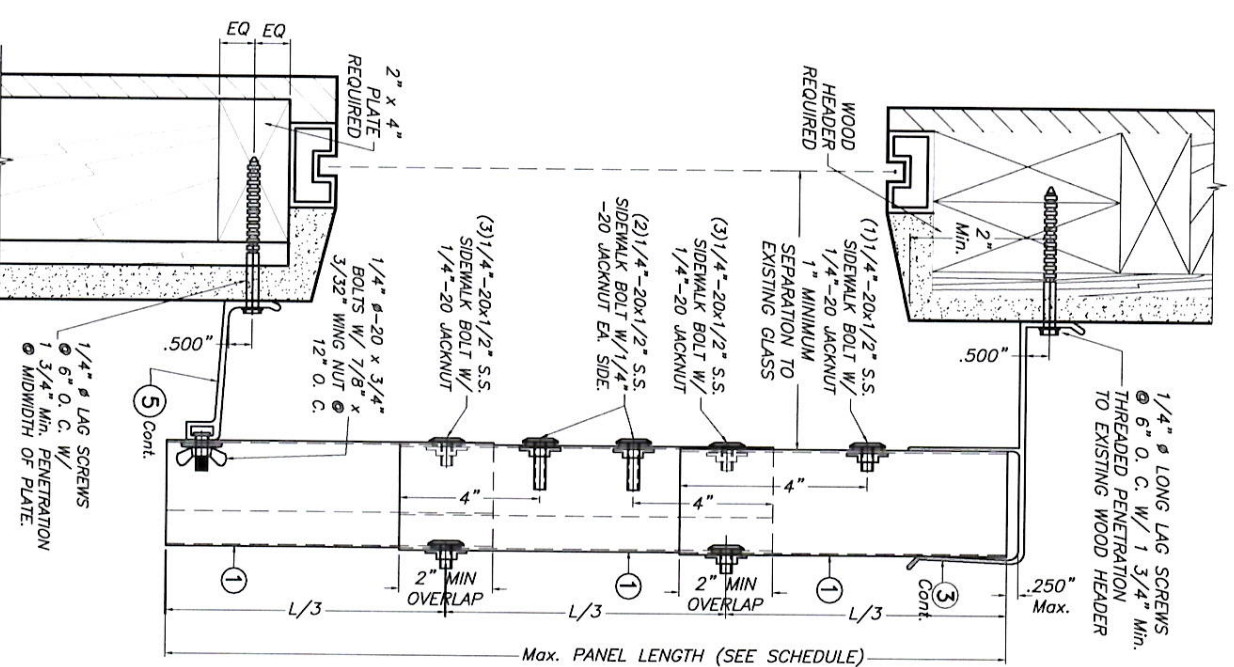


REV. NO.	DESCRIPTION	DATE	REV. NO.	DESCRIPTION	DATE
1		07/25/17	3		
2	OLD 15-042	07/25/17	4		

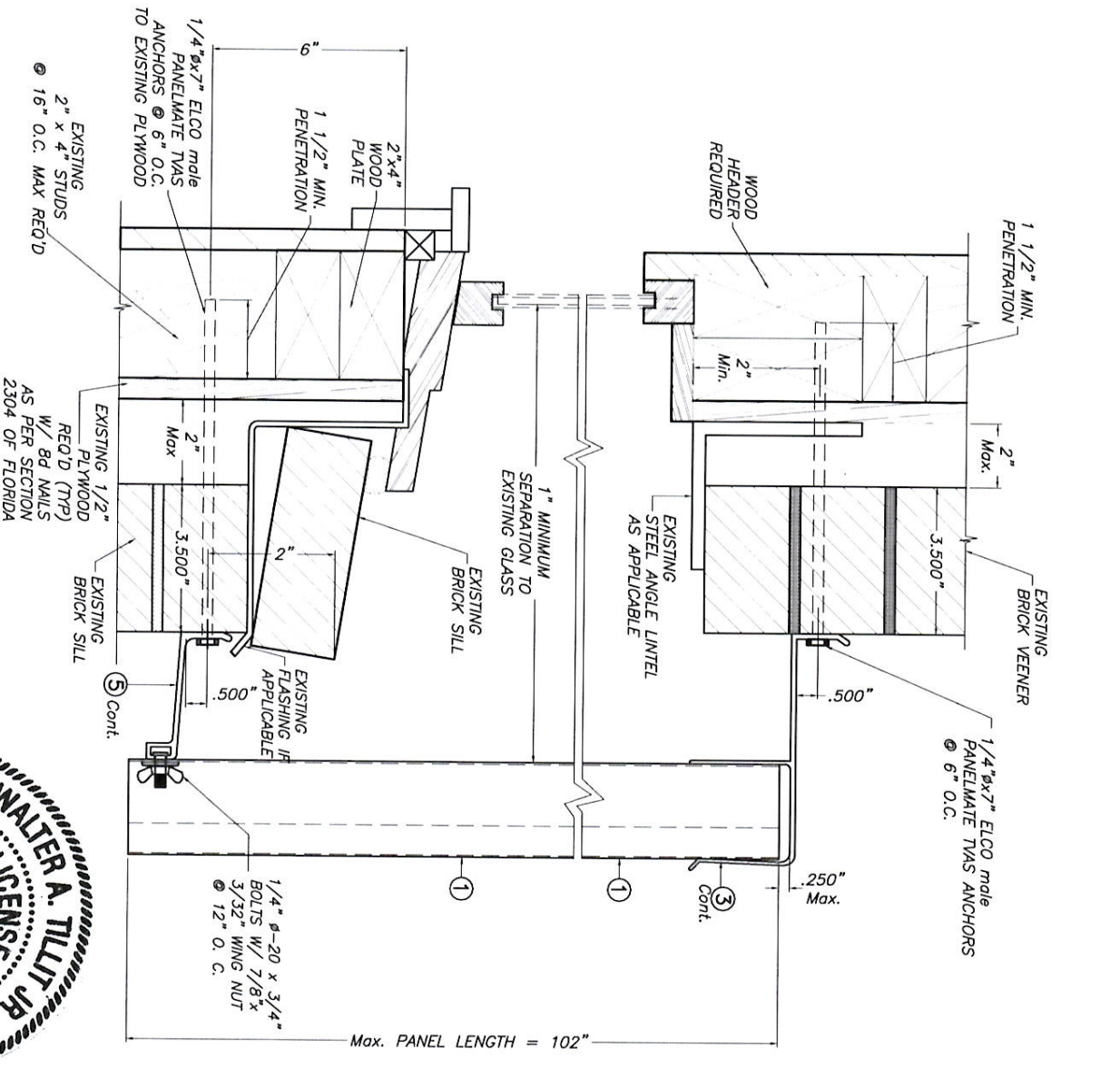
DATE: 07/25/17
DRAWING NO: 17-094
SHEET 14 OF 15



ALTERNATIVE 13A



ALTERNATIVE 13B



ALTERNATIVE 14

BUILD-OUT INSTALLATION

SCALE : 1/8" = 1"

NOTE FOR COMBINATION OF SECTIONS:
WALL MOUNTING SECTIONS CAN BE COMBINED
IN ANY WAY TO SUIT ANY INSTALLATION.

WALL MOUNTING INSTALLATIONS
INSTALLATION DETAILS ON EXISTING WOOD BUILDINGS
VALID FOR PANELS 1 USED JOINTLY
WITH INTERIORLY REMOVABLE PANELS 1

SCALE : 1/8" = 1"

- NOTES:**
- INSTALLATIONS ARE ONLY VALID FOR MAX. A.S.D. DESIGN PRESSURE RATING AND Max. PANEL LENGTH AS PER SCHEDULES SHOWN ON SHEET 10 OF 15 EXCEPT THAT PANEL'S LENGTHS FOR FLOOR/CEILING INSTALLATIONS SHALL BE LIMITED TO 109"
 - FOR NEW WOOD FRAME CONSTRUCTION: WOOD MEMBERS TO BE SOUTHERN PINE No. 2 W/ SPECIFIC DENSITY OF 0.55 OR EQUAL.

© 2017 TILTECO, INC.

TILTECO INC.

TILLIT TESTING & ENGINEERING COMPANY
6335 N.W. 35th, Ste. 305, Virginia Gardens, FL 33166
Phone: (305)971-1530, Fax: (305)971-1531
EB-0006719
WALTER A. TILLIT JR., P.E.
FLORIDA Lic. # 44167

FLORIDA BUILDING CODE (Non High Velocity Hurricane Zone)

0.040" BERTHA ALUMINUM STORM PANEL
(2.25" DEEP)

EASTERN METAL SUPPLY, INC.

4268 WEST ROADS DRIVE
WEST PALM BEACH, FL 33407
PHONE: (561)209-8263, FAX: (561)9841-1716

L.C. DRAWN BY:
07/25/17 DATE:
17-094 DRAWING NO.
SHEET 15 OF 15

REV. NO.	DESCRIPTION	DATE	REV. NO.	DESCRIPTION	DATE
1	QLD 15-042	07/25/17	3		
2			4		

